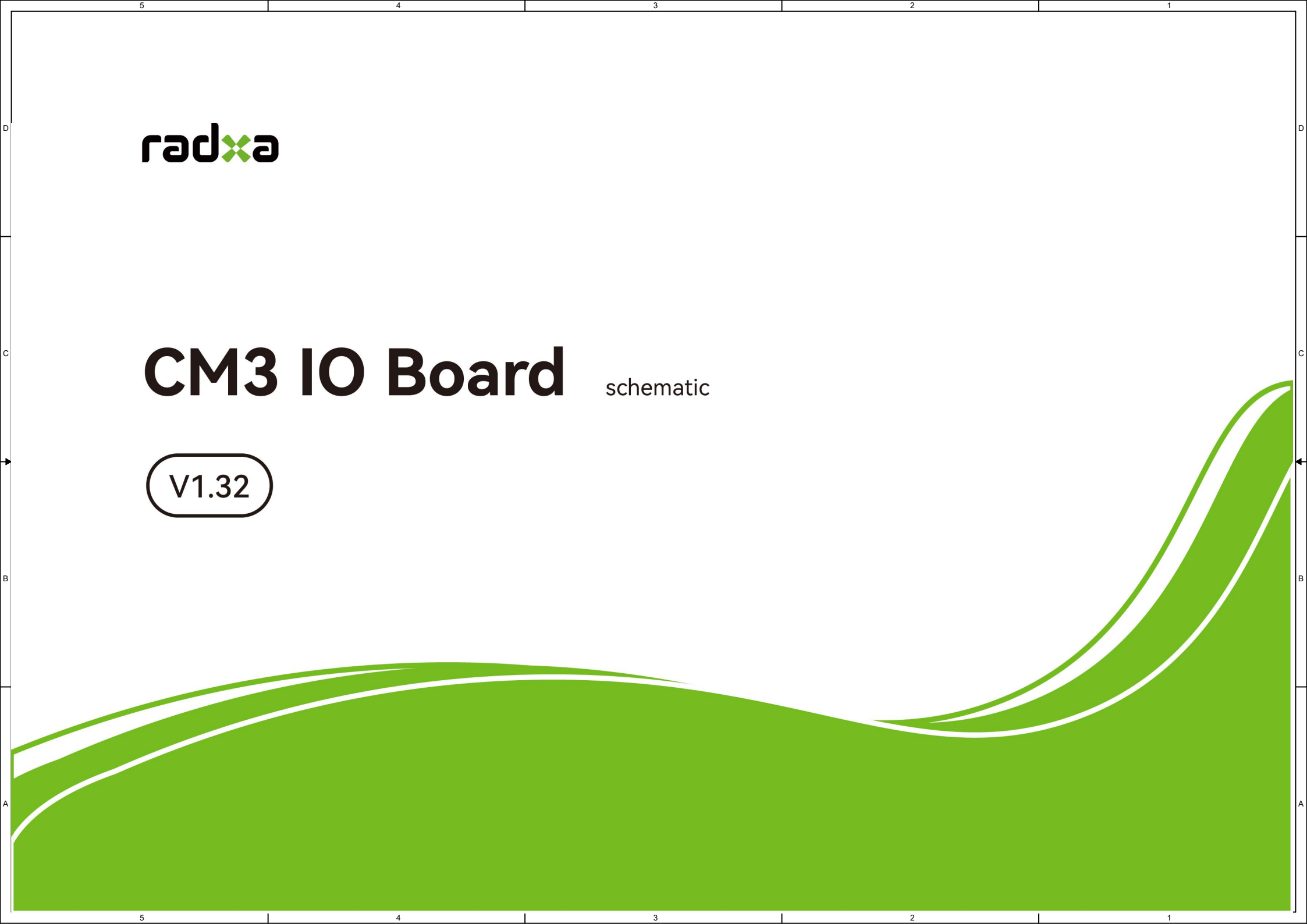




# CM3 IO Board schematic

V1.32



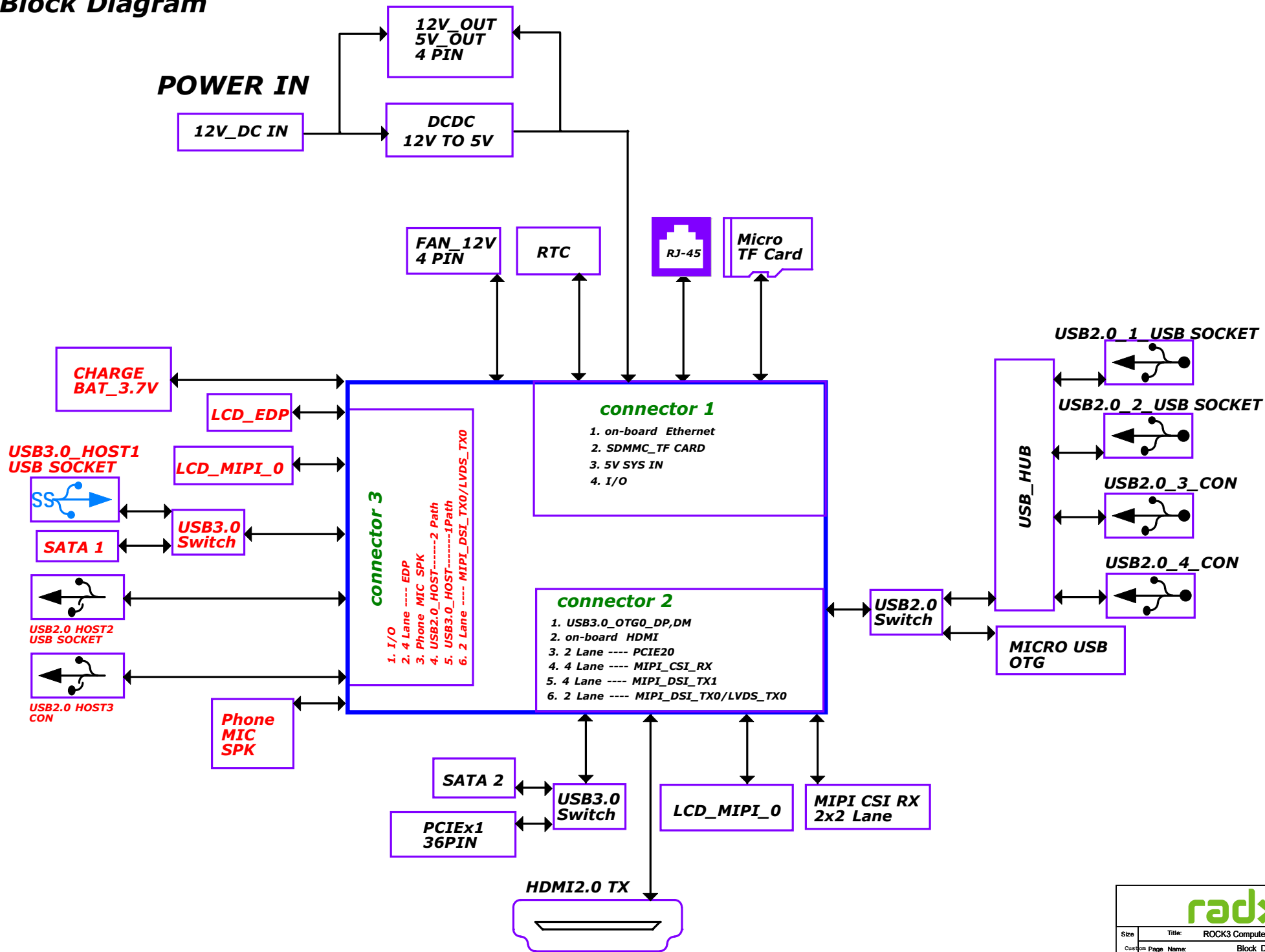
# Table of Content

- 01.cover
- 02.Index
- 03.Block\_Diagram
- 04.HDMI0 OUT
- 05.Ethernet
- 06.MicroSD Card
- 07.PCIE2.0
- 08.AUDIO
- 09.LCD\_eDP TX
- 10.MIPI\_LCD\_TX0
- 11.MIPI\_CSI\_RX
- 12.USB OTG/ HUB
- 13.USB HOST
- 14.FAN\_RTC\_BAT
- 15.Power-DC IN
- 16.40PIN CONNECT
- 17.GPIO+VCC\_Connector
- 18.High Speed Serial\_Connector
- 19.IO\_Connector
- 20.MIPI\_LCD\_TX1

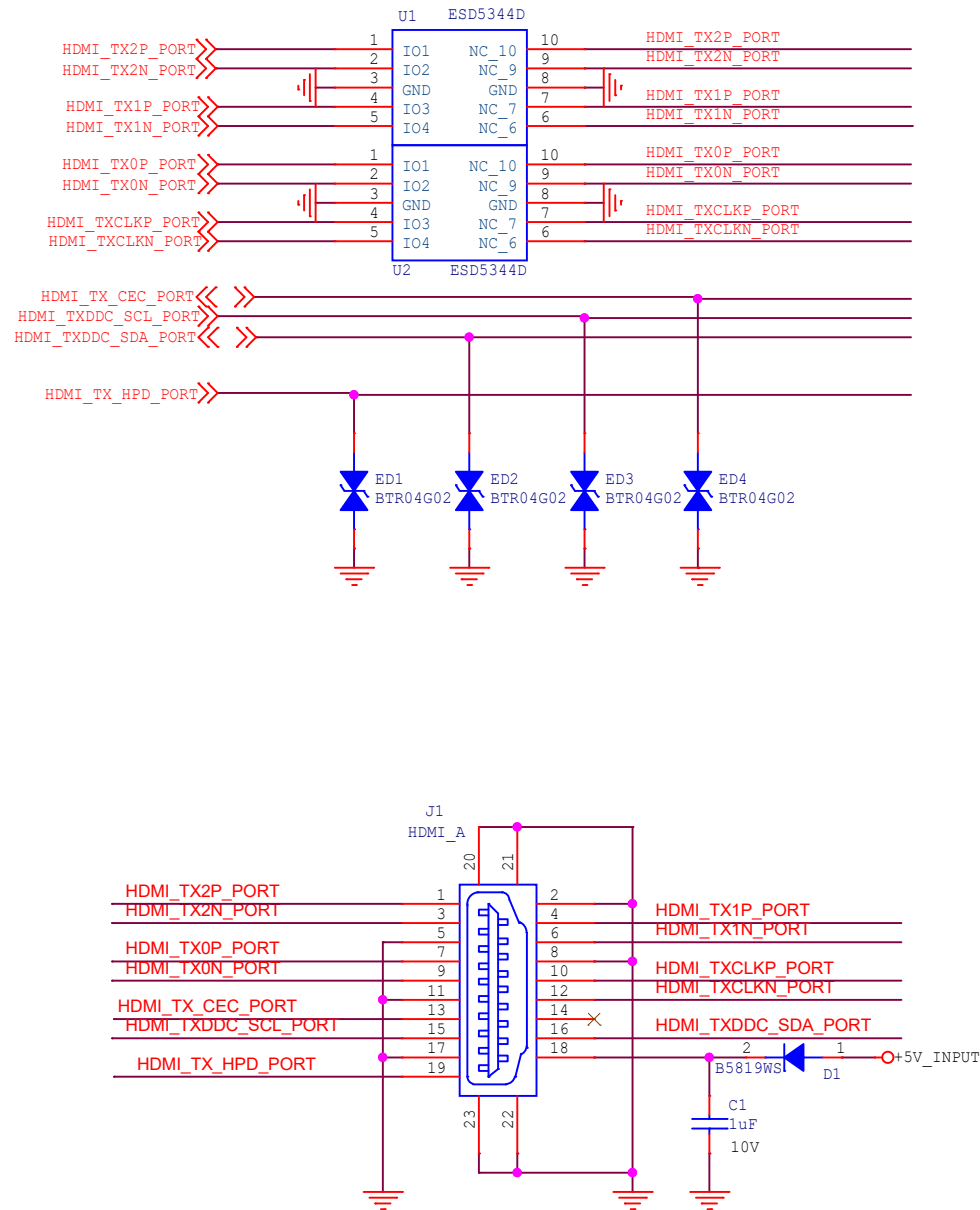


Size	Title: ROCK3 Compute Module IO Board	REV
A4	Page Name: Index	1.32
Date: Sunday, January 15, 2023	Sheet 02 of 20	

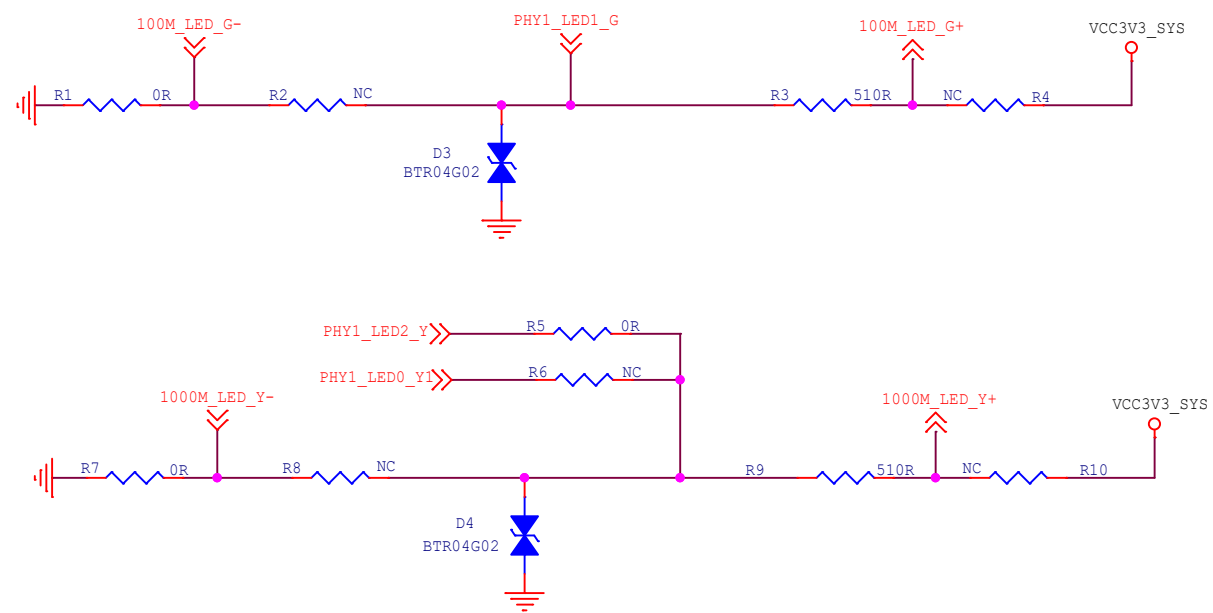
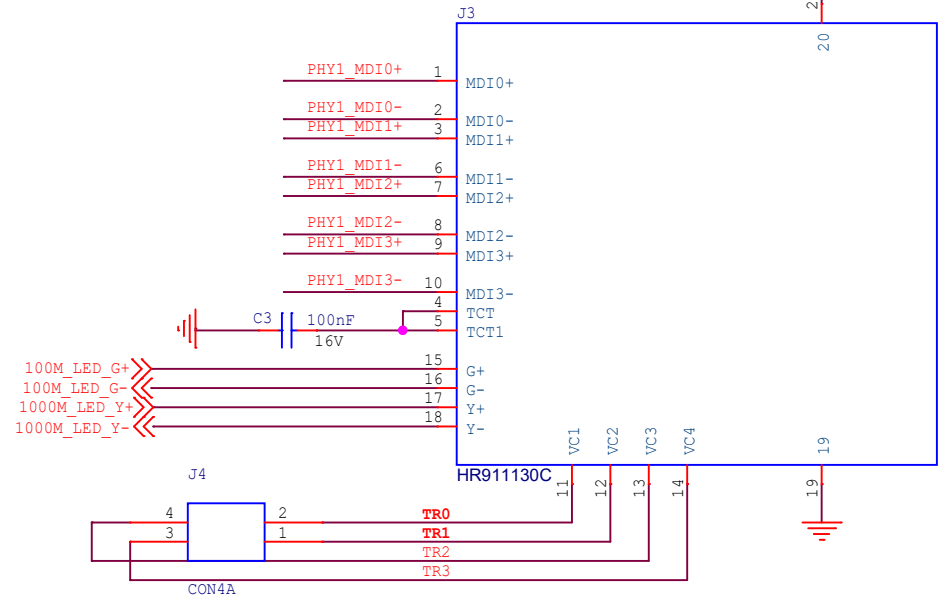
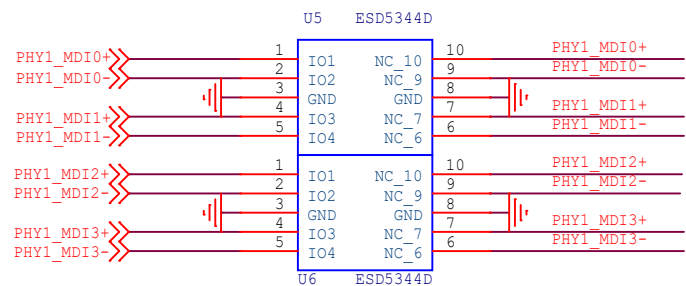
# Block Diagram



# HDMI2.0 TX

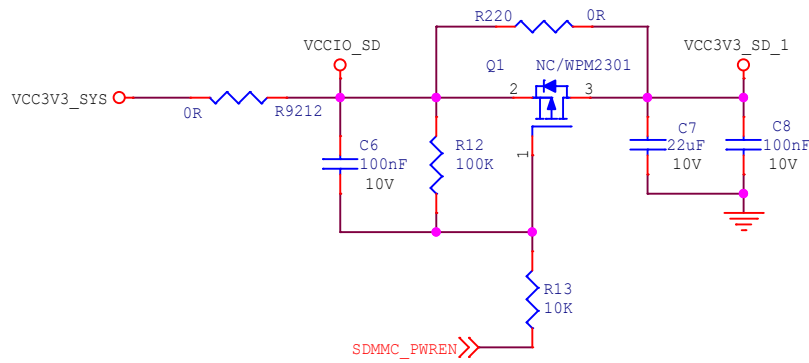
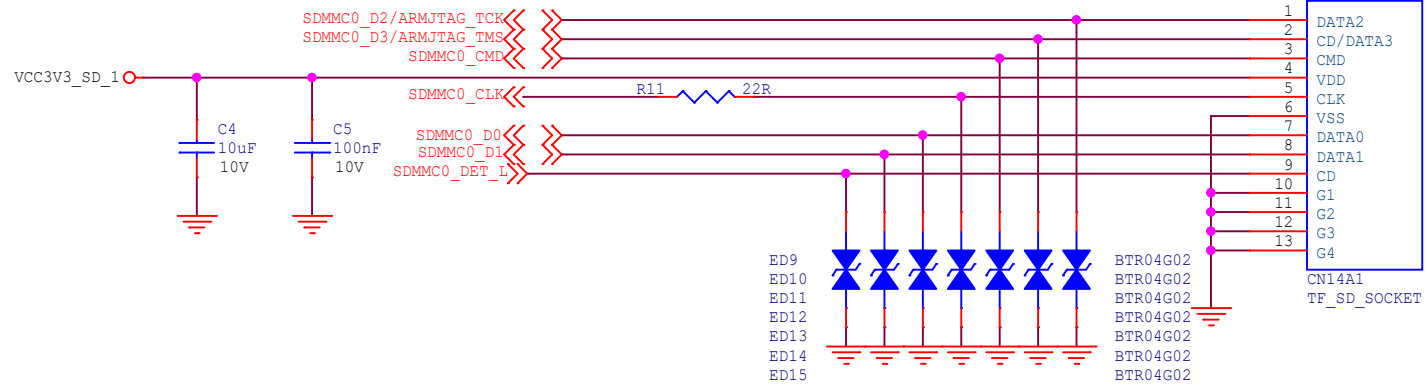


Size	Title: ROCK3 Compute Module IO Board	REV
A4	Page Name: HDMIO OUT	1.32
Date: Sunday, January 15, 2023		Sheet 04 of 20

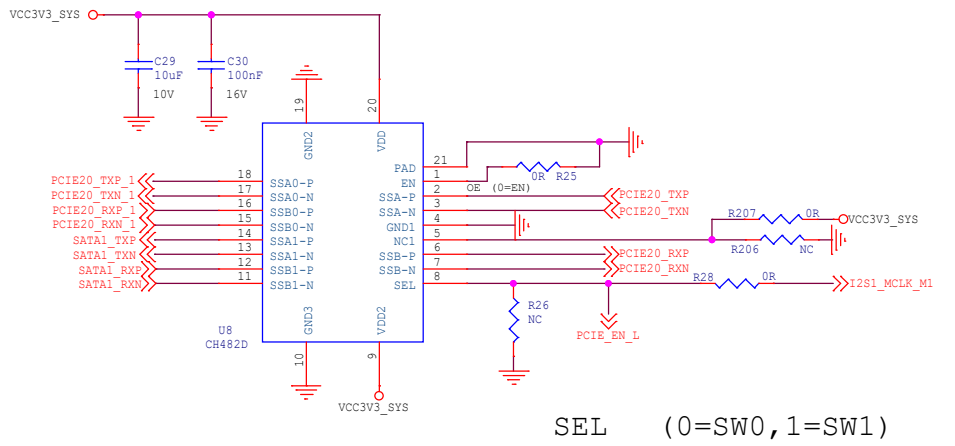
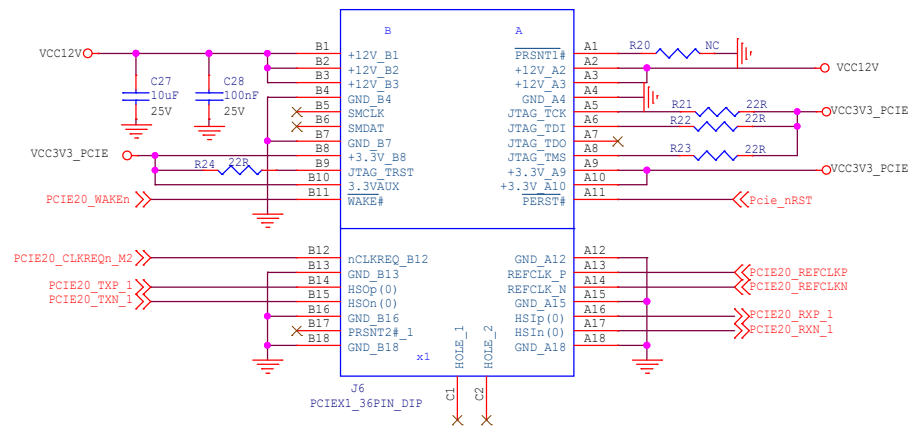
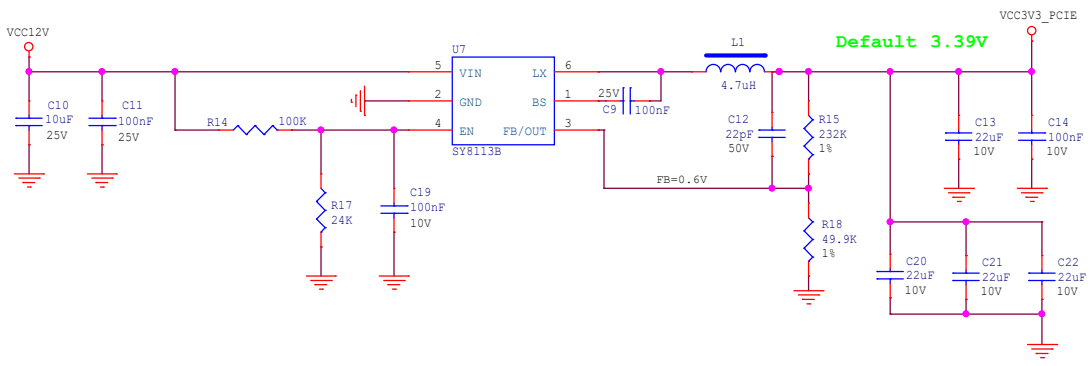


Size	Title: ROCK3 Compute Module IO Board	REV
A4	Page Name: Ethernet	1.32
Date: Sunday, January 15, 2023		Sheet 05 of 20

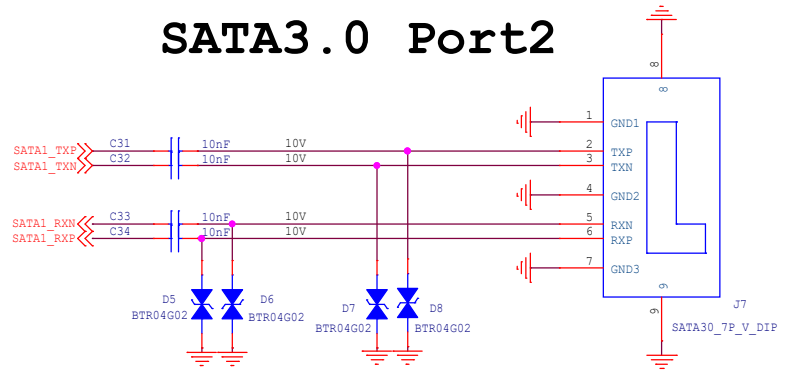
# MicroSD Card




Size	Title: ROCK3 Compute Module IO Board	REV
A4	Page Name: MicroSD Card	1.32
Date: Sunday, January 15, 2023	Sheet 06 of 20	

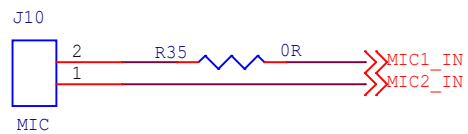
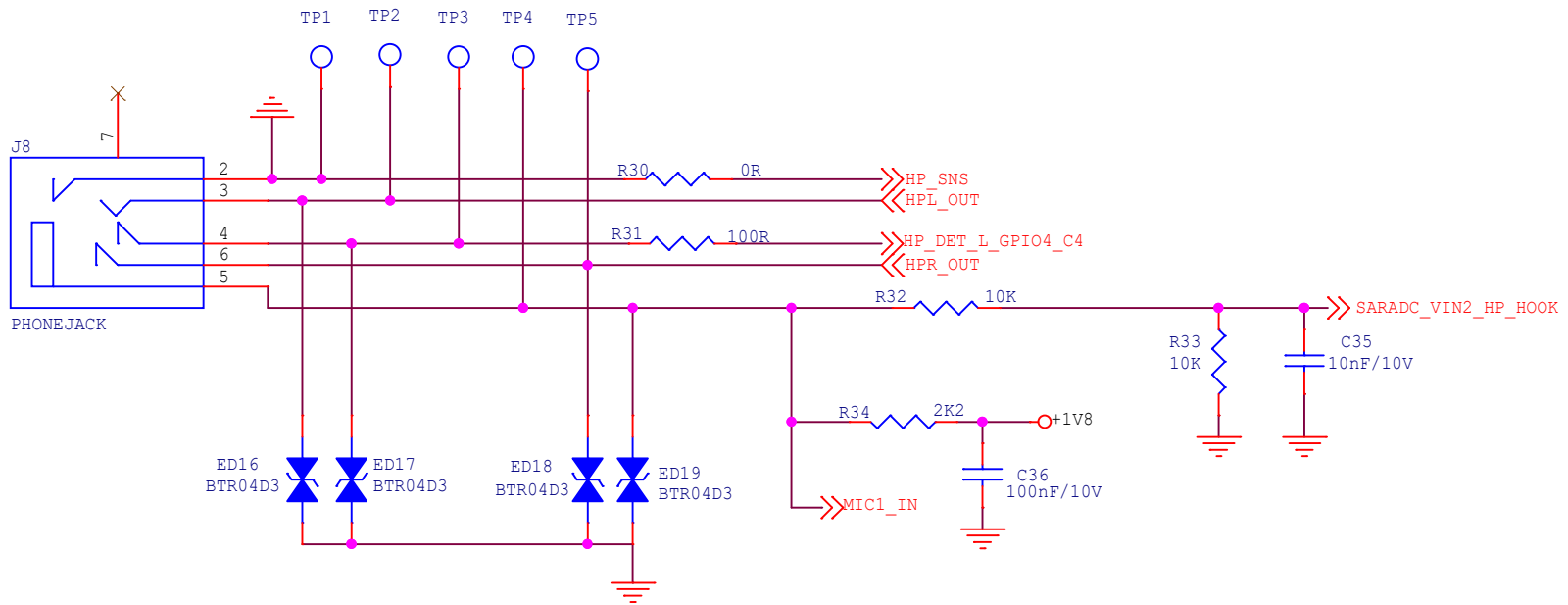


## SATA3.0 Port2





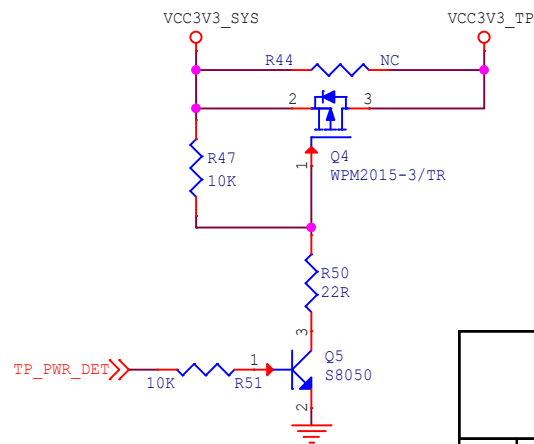
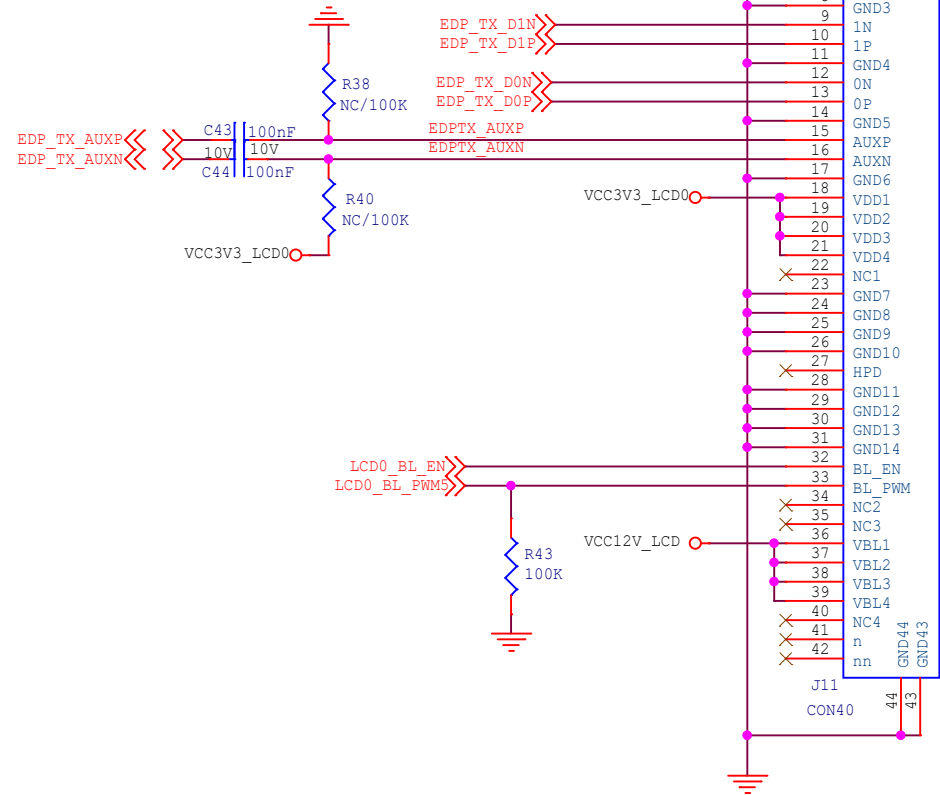
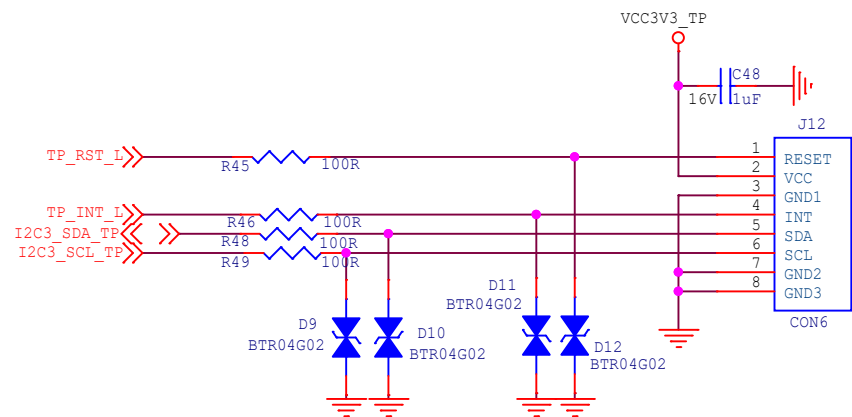
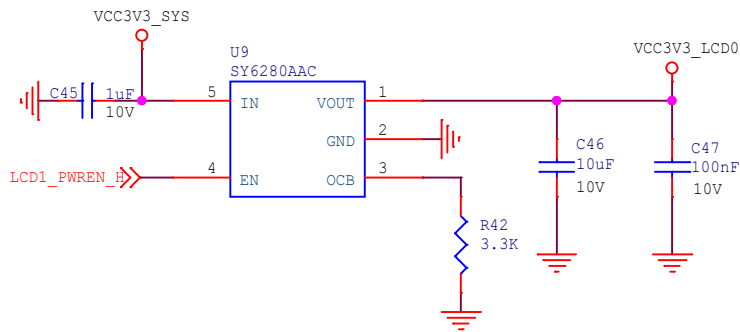
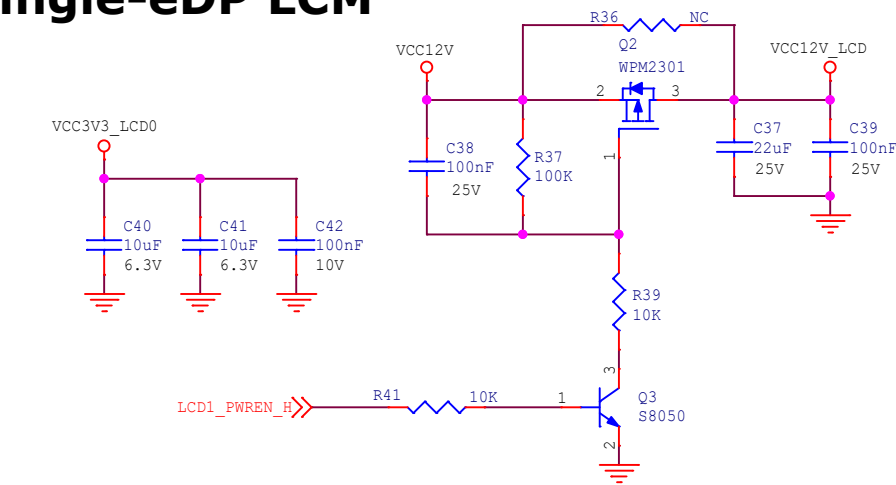
<b>Size</b>	<b>Title:</b> ROCK3 Compute Module IO Board	<b>REV</b>
<b>B</b>	<b>Page Name:</b> PCIE2.0	<b>1.32</b>
<b>Date:</b> Sunday, January 15, 2023		<b>Sheet</b> 07 <b>of</b> 20




Size	Title: ROCK3 Compute Module IO Board	REV
A	Page Name: AUDIO	1.32
Date: Sunday, January 15, 2023 Sheet 08 of 20		



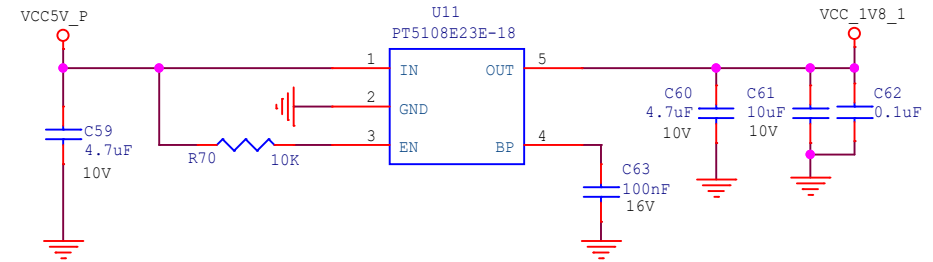
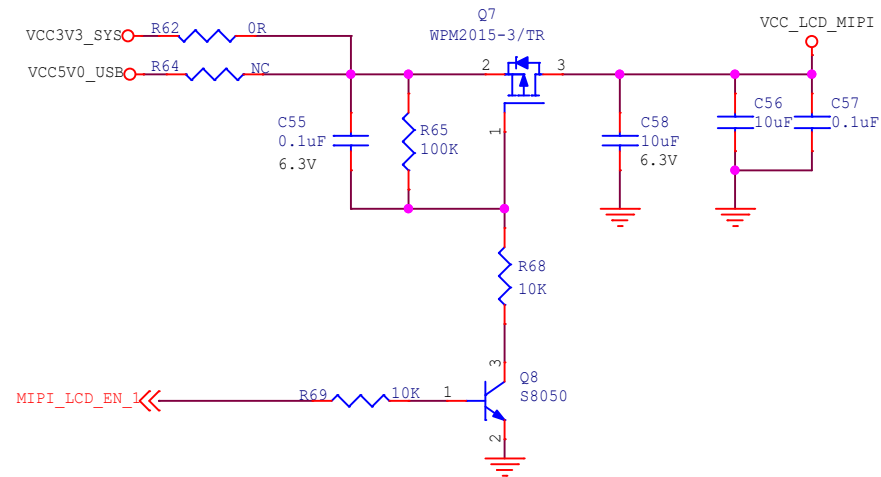
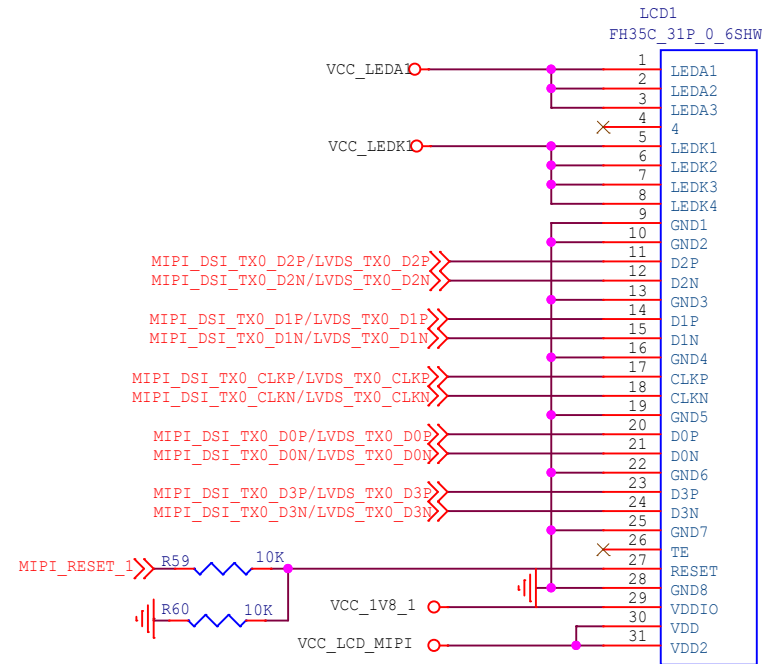
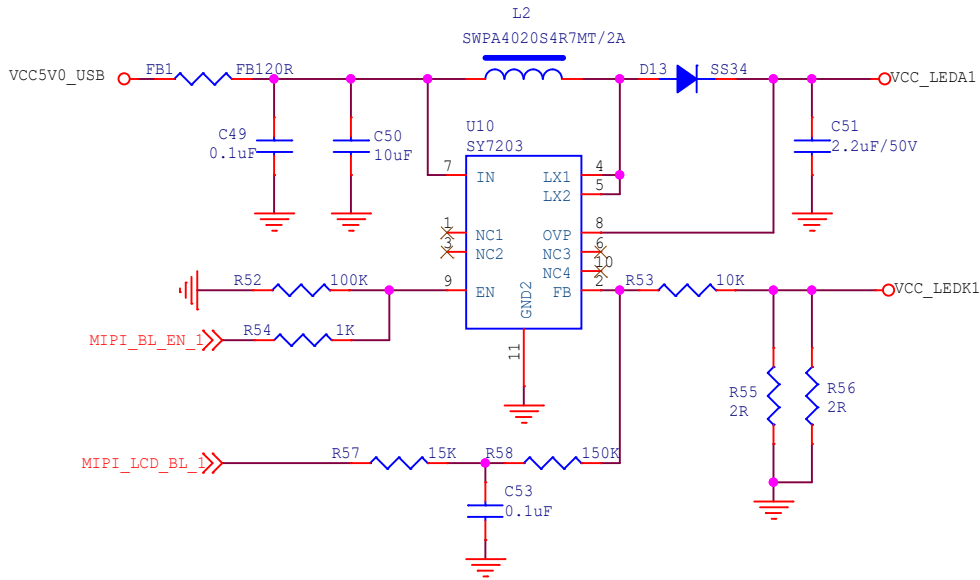
# Single-eDP LCM



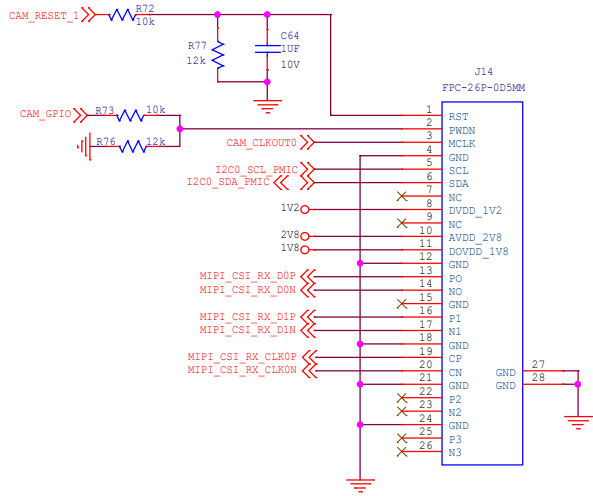


Size	Title: <b>ROCK3 Compute Module IO Board</b>	REV
A4	Page Name: <b>LCD_eDP TX</b>	1.32
Date: Sunday, January 15, 2023		Sheet 09 of 20

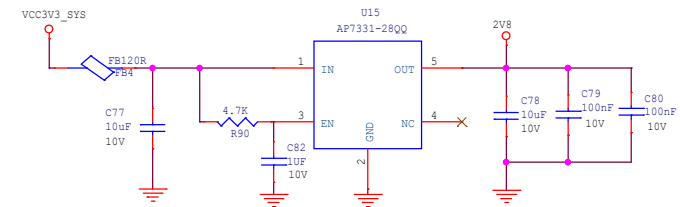
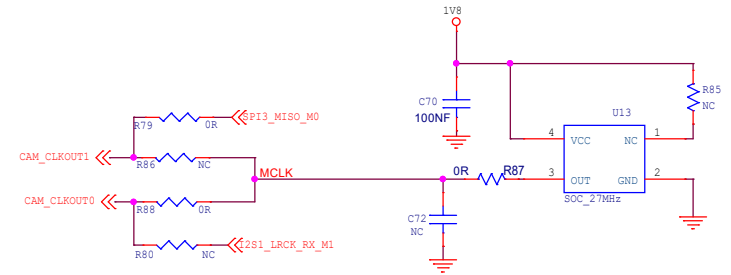
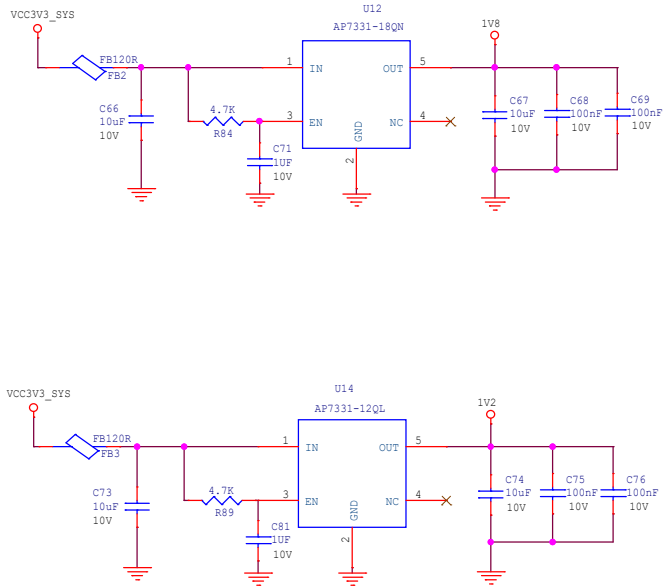
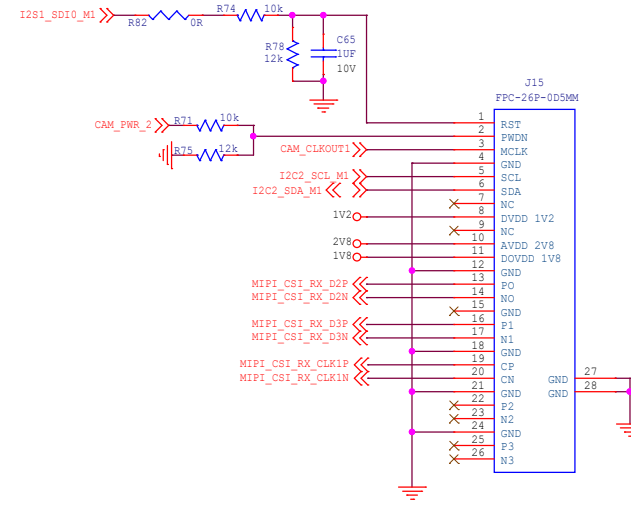
# MIPI\_LCD\_TX0

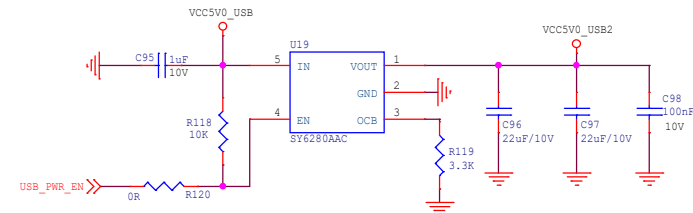
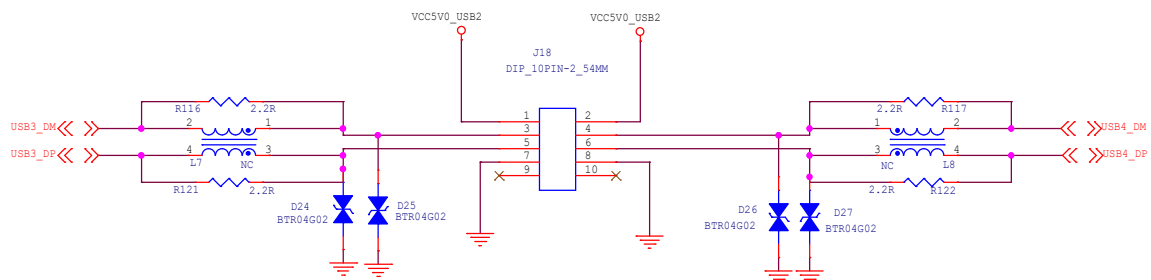
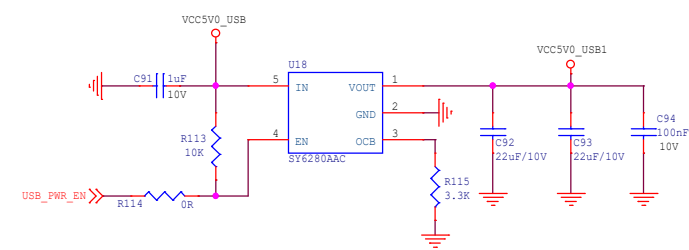
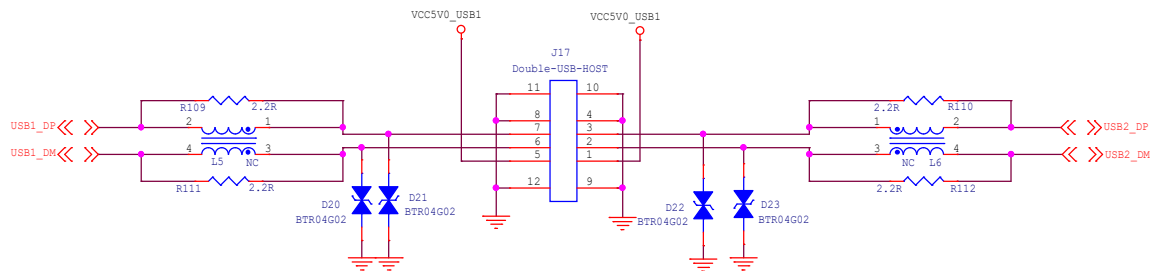
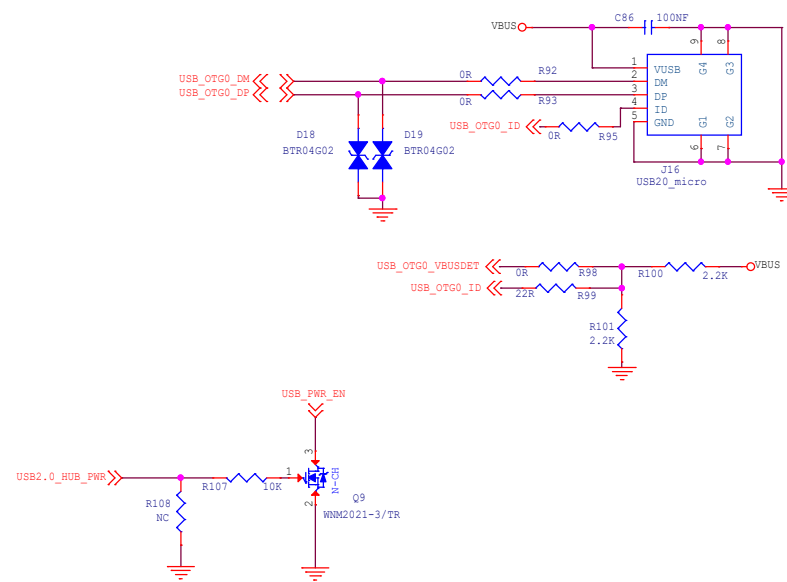
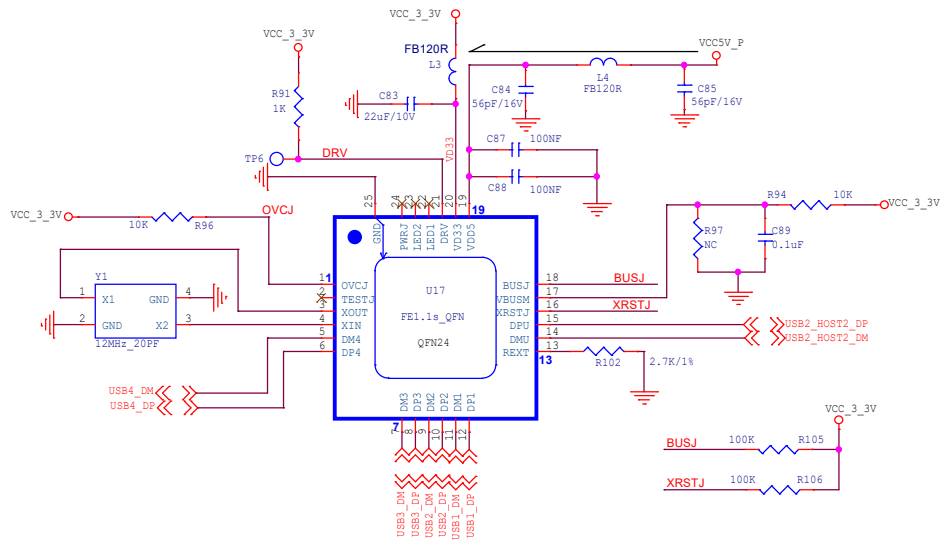


# MIPI\_CSI\_RX 2Lanes

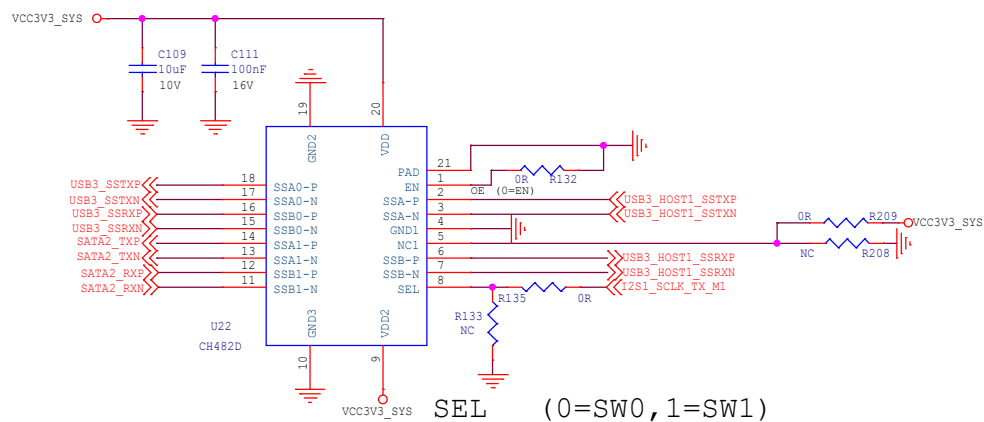
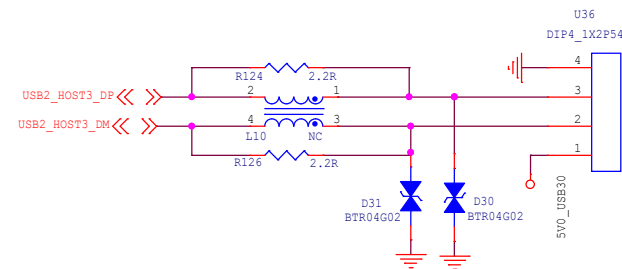
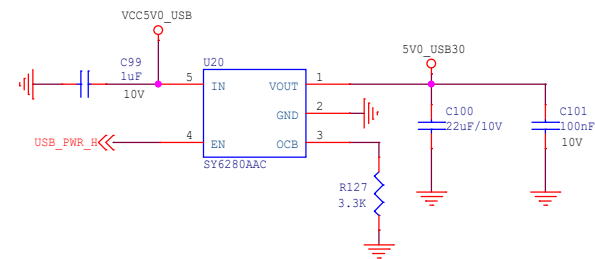
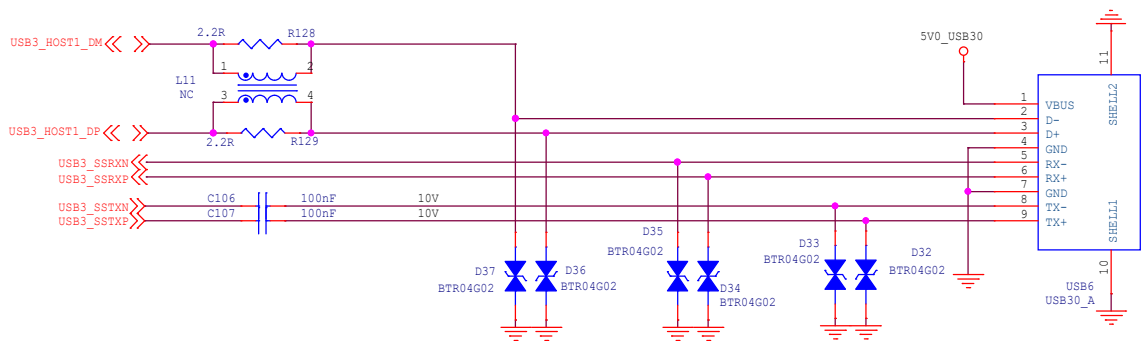


# MIPI\_CSI\_RX 2Lanes

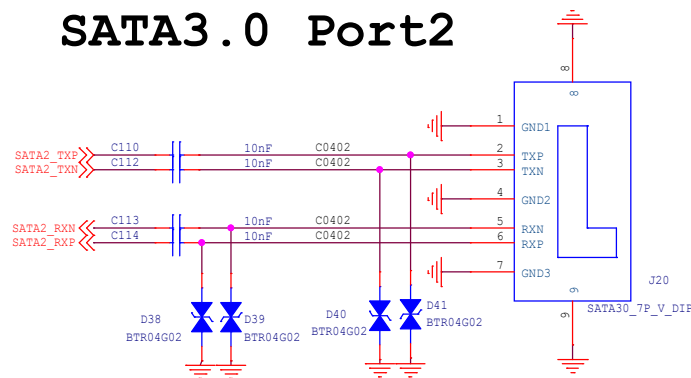




Size	Title: ROCK3 Compute Module IO Board	REV
A3	Page Name: USB OTG/ HUB	1.32
Date: Sunday, January 15, 2023	Sheet	12 of 20

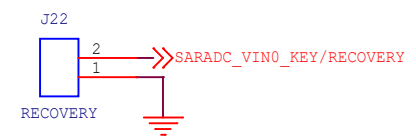
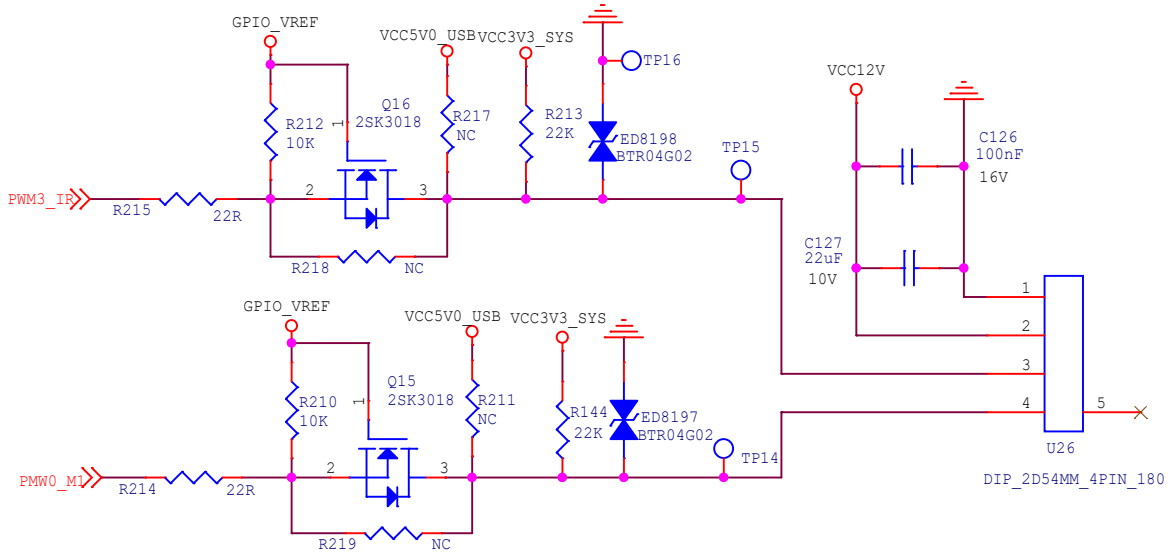
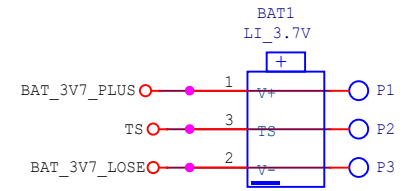
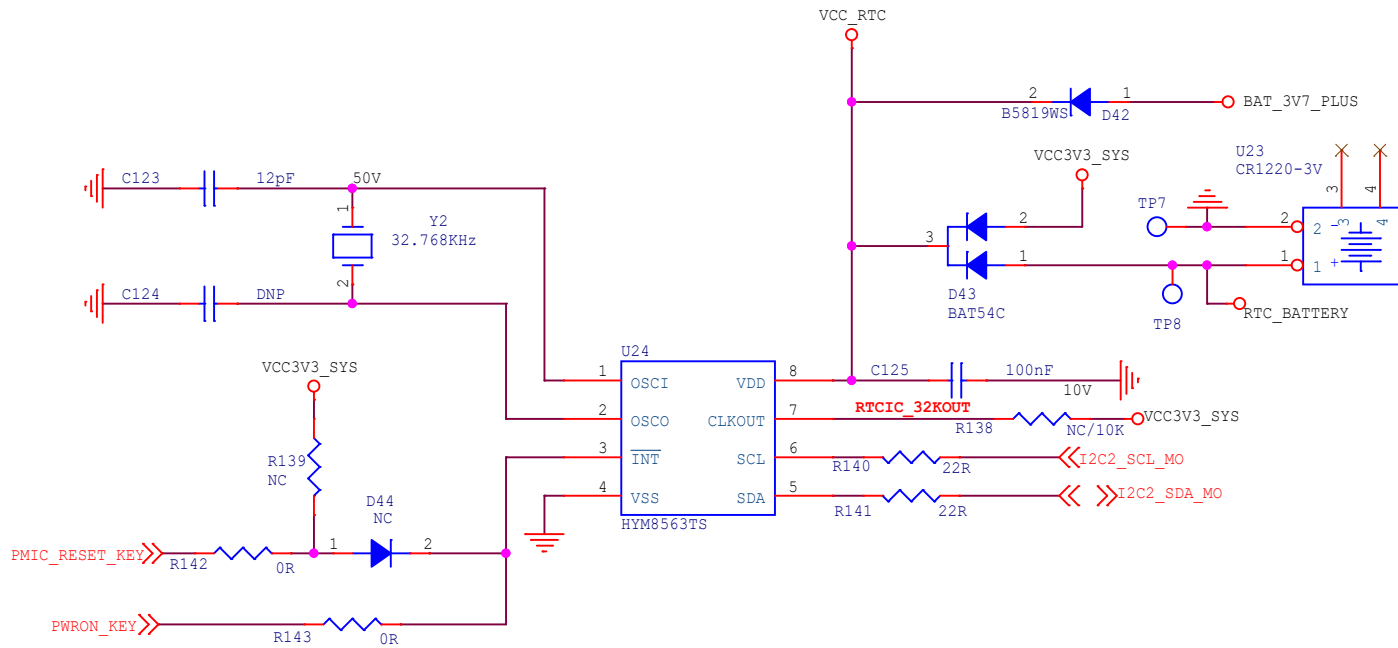



## SATA3.0 Port2



radxa

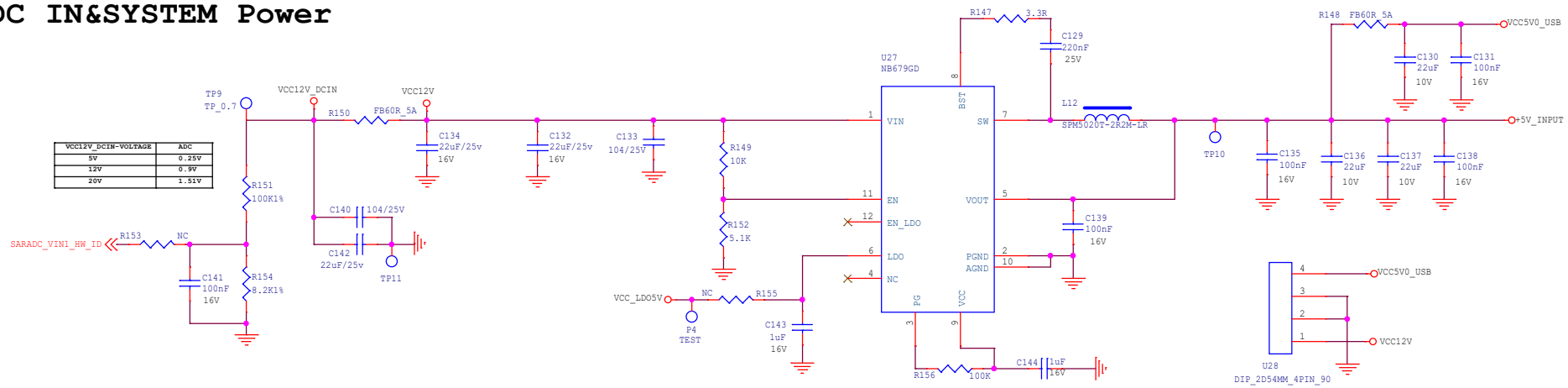
Size	Title: ROCK3 Compute Module IO Board	REV
B	Page Name: USB HOST	1.32
Date:	Sunday, January 15, 2023	Sheet 13 of 20





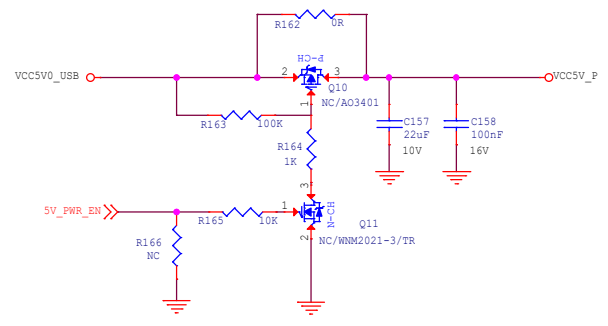
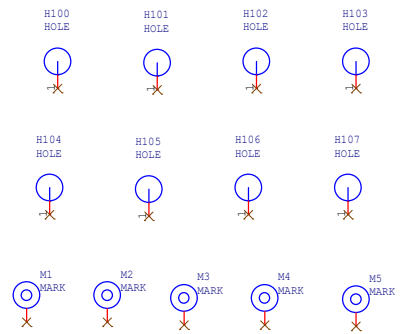
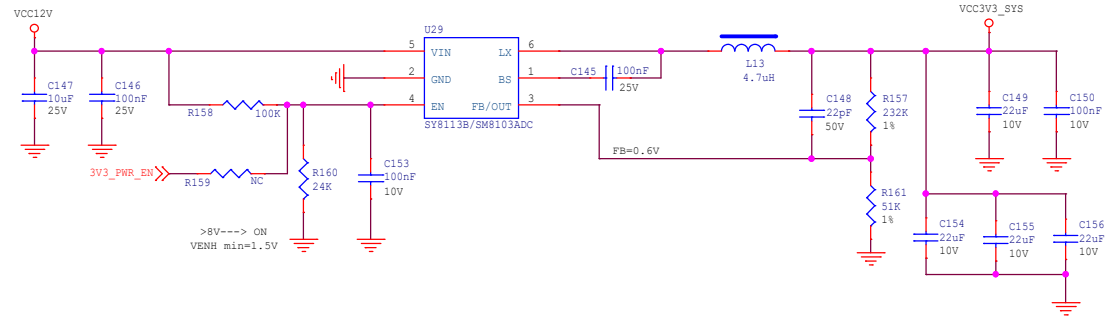
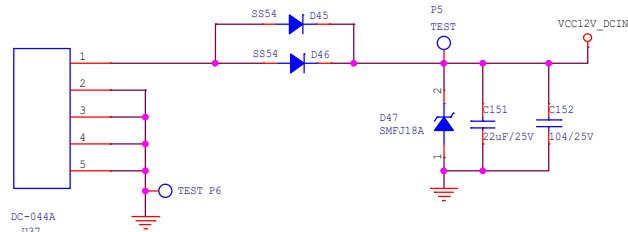
<b>Size</b>	<b>Title:</b> ROCK3 Compute Module IO Board	<b>REV</b>
A4	<b>Page Name:</b> FAN_RTC_BAT	1.32
<b>Date:</b> Sunday, January 15, 2023		
<b>Sheet</b> 14 of 20		


# DC IN&SYSTEM Power



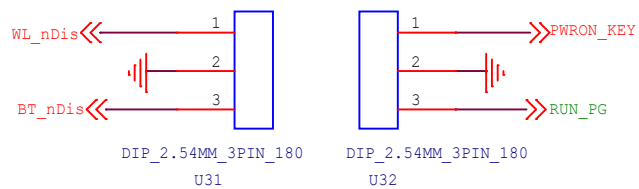
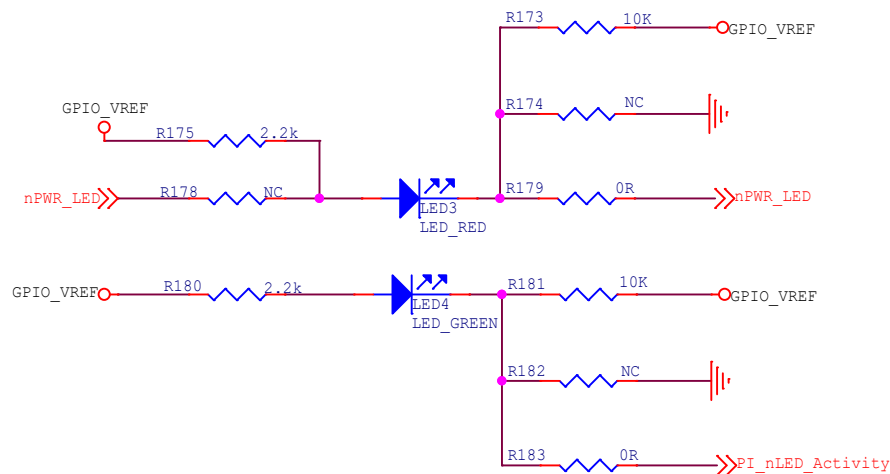
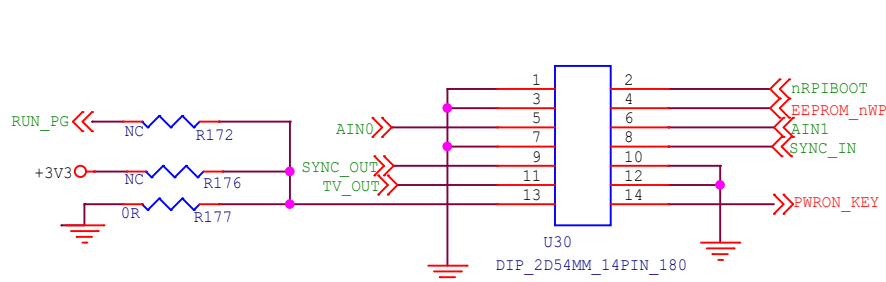
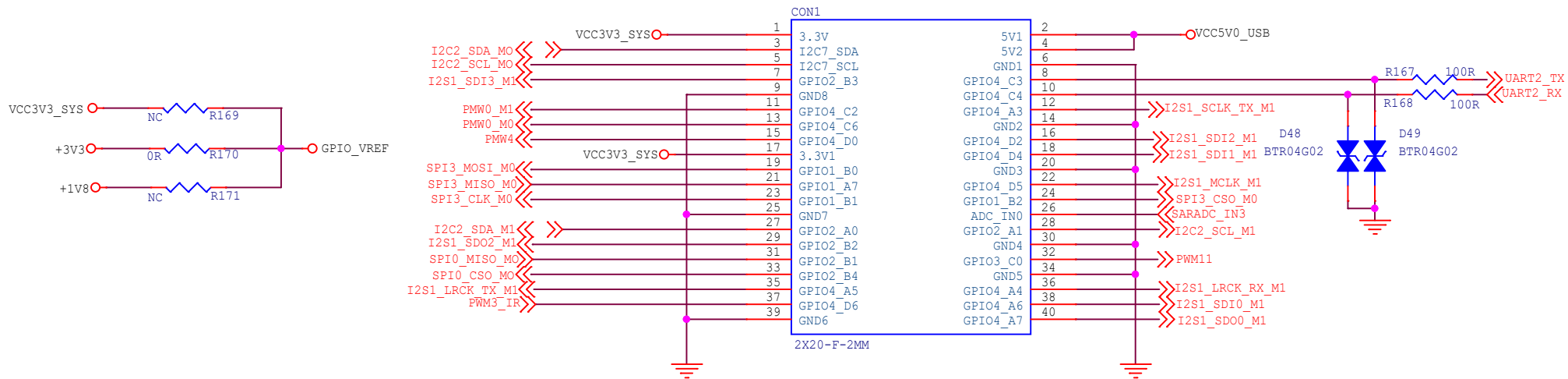
VCC12V_DCIN-VOLTAGE	ADC
5V	0.25V
12V	0.9V
20V	1.51V

## DC12V





Size	Title: <b>ROCK3 Compute Module IO Board</b>	REV
A3	Page Name: <b>Power-DC IN</b>	1.32
Date: Sunday, January 15, 2023	Sheet 15	of 20

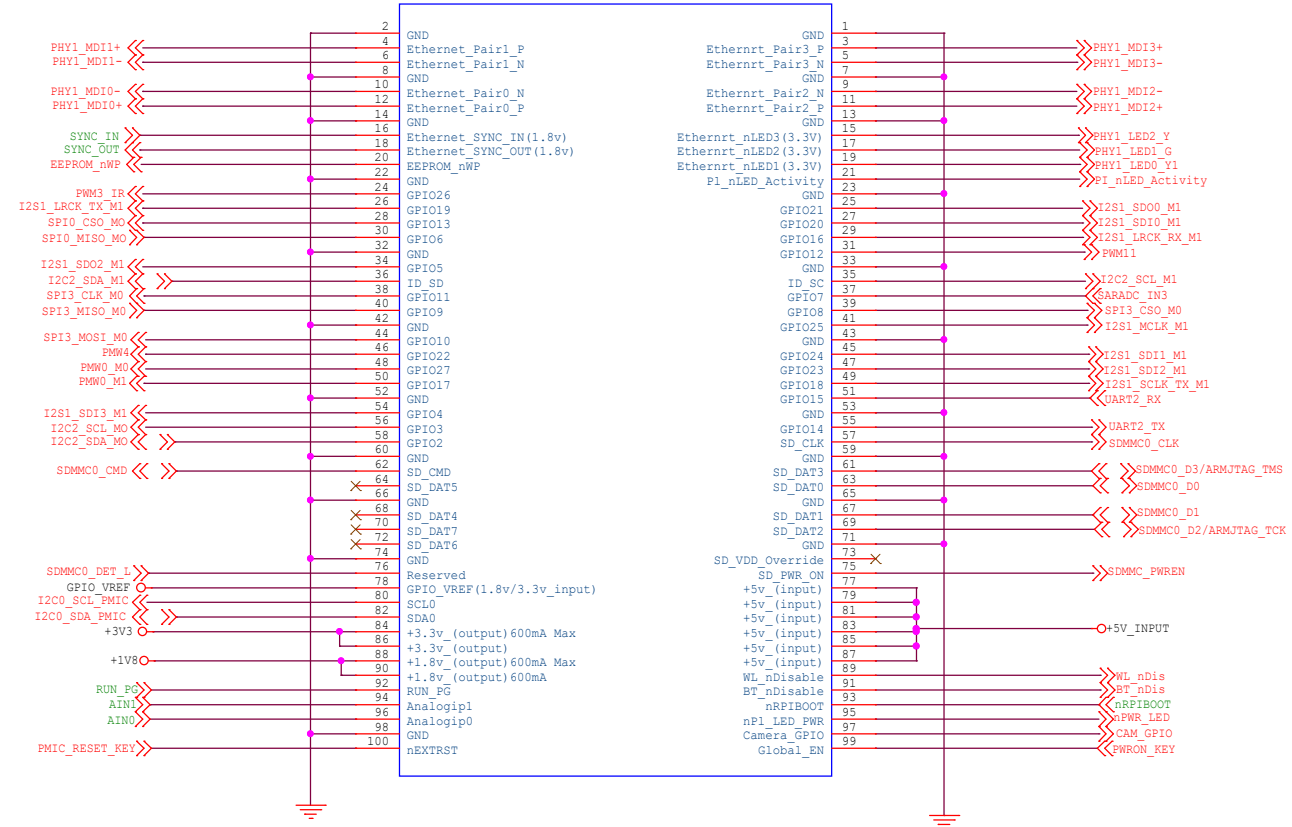



**radxa**

<b>Size</b>	Title: <b>ROCK3 Compute Module IO Board</b>	REV
A4	Page Name: <b>40PIN CONNECT</b>	1.32
Date: Sunday, January 15, 2023 Sheet 16 of 20		

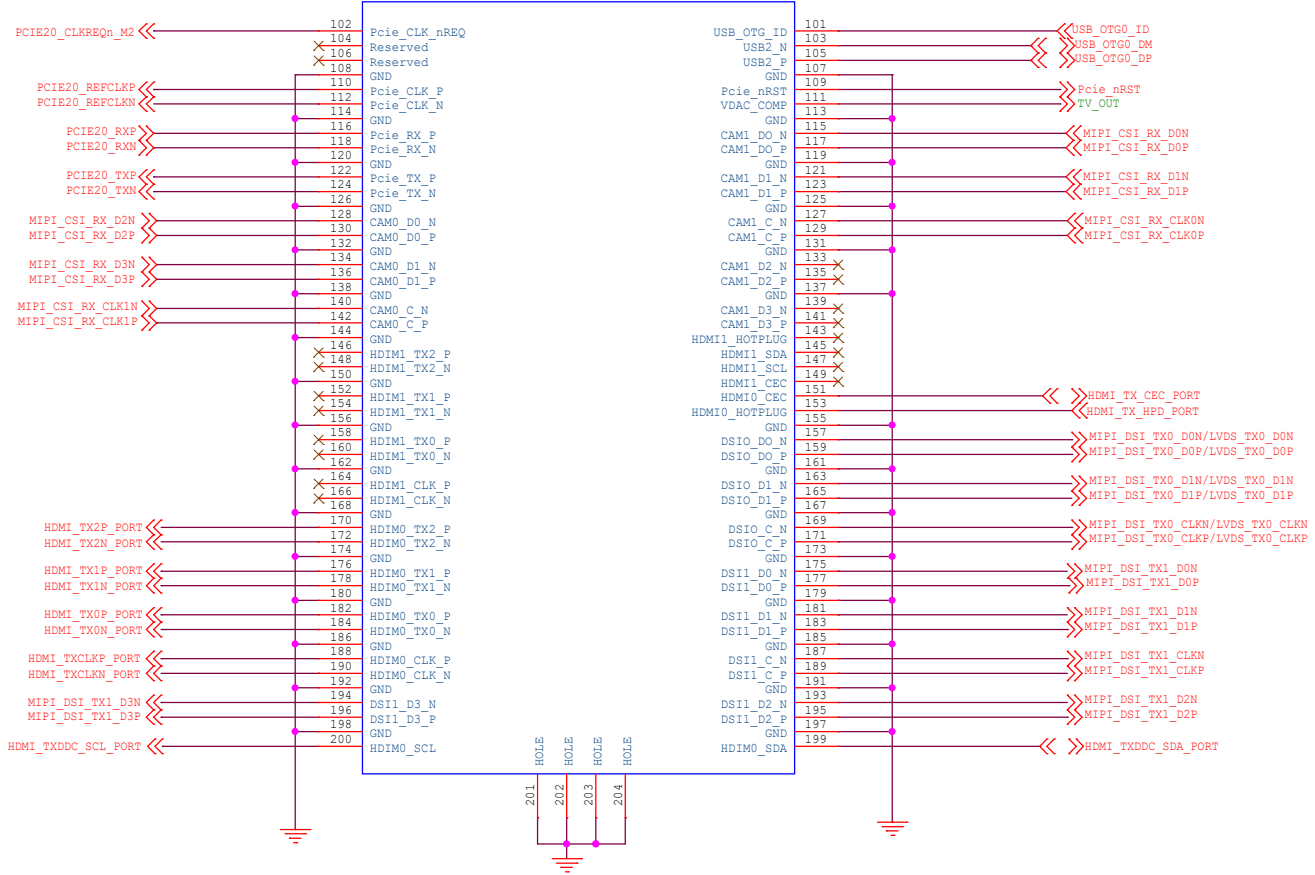


U33A  
connector 1

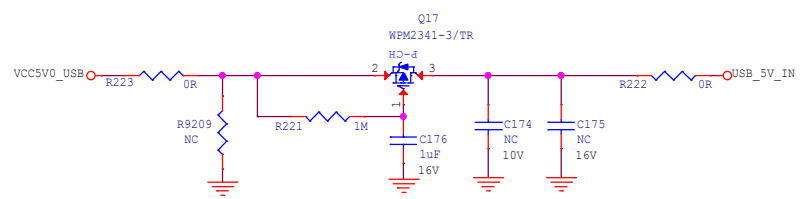
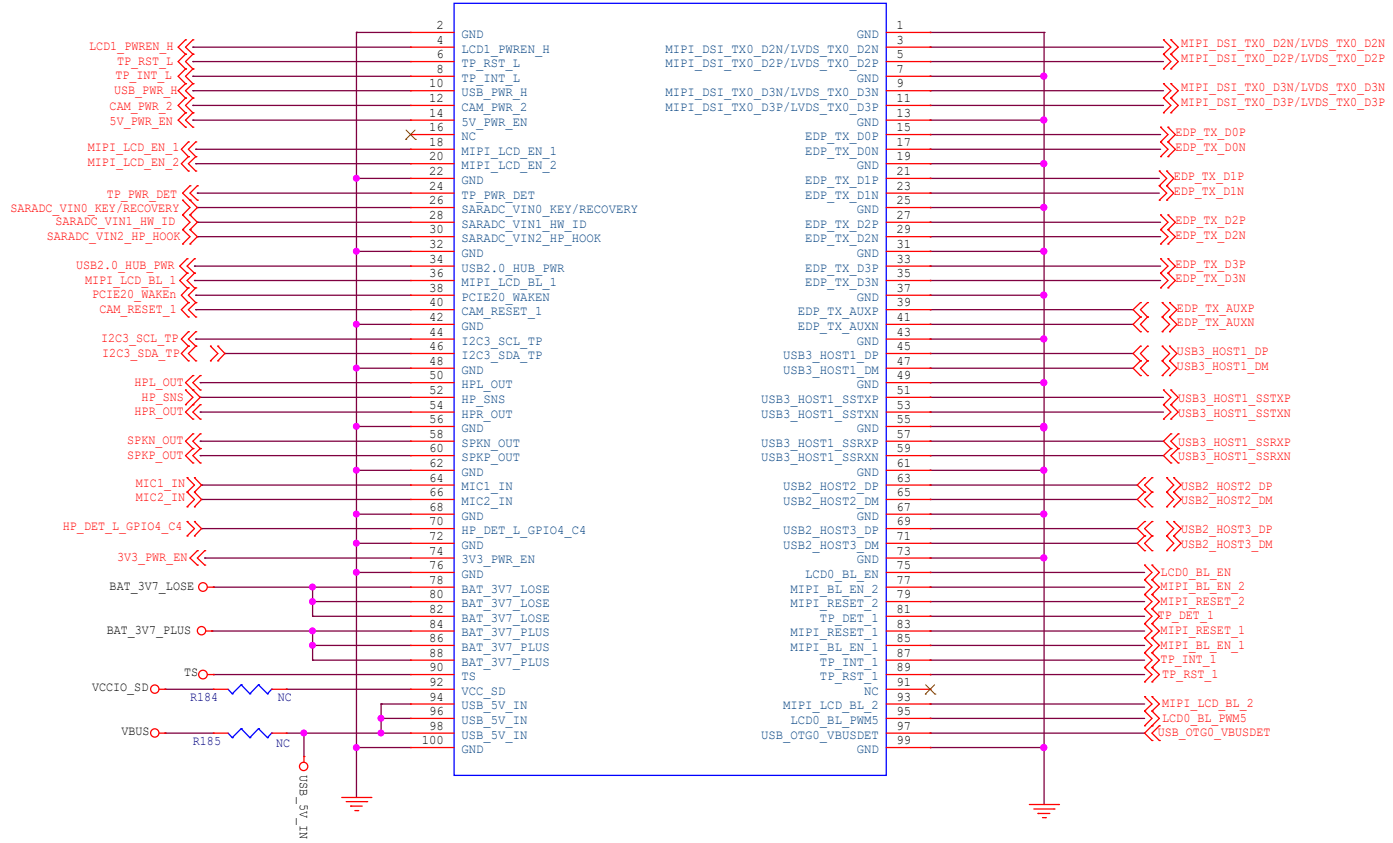
Size	Title: ROCK3 Compute Module IO Board	REV
B	Page Name: GPIO+VCC_Connector	1.32
Date:	Sunday, January 15, 2023	Sheet 17 of 20


U33B  
connector 2



Size	Title: ROCK3 Compute Module IO Board	REV
B	Page Name: High Speed Serial Connector	1.32
Date:	Sunday, January 15, 2023	Sheet 18 of 20

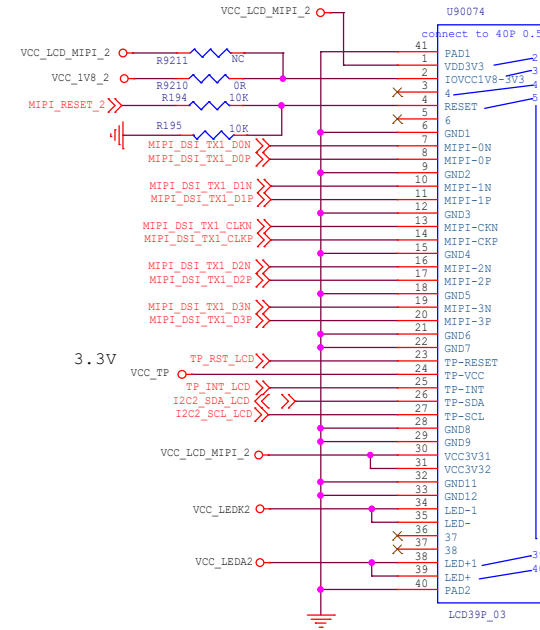
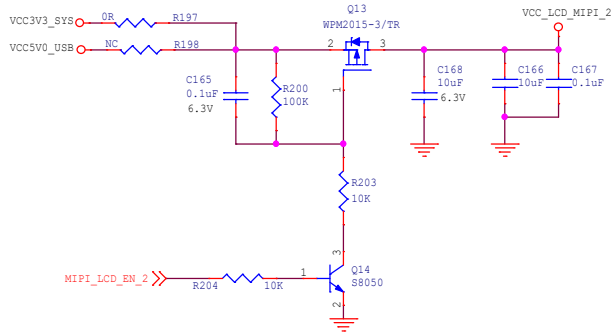
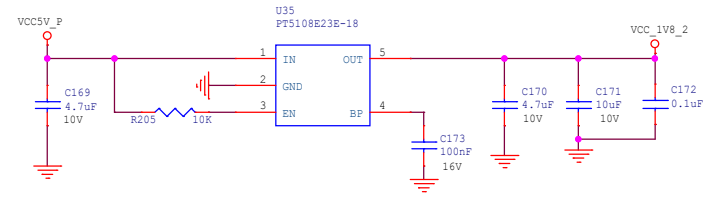
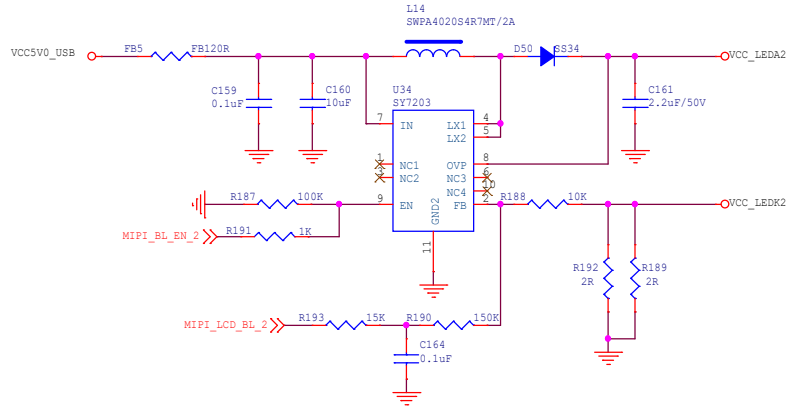
J24  
connector 3





<b>Size</b>	<b>Title:</b> ROCK3 Compute Module IO Board	<b>REV</b>
<b>B</b>	<b>Page Name:</b> IO_Connector	1.32
<b>Date:</b> Sunday, January 15, 2023	<b>Sheet</b> 19 <b>of</b> 20	

# MIPI\_LCD\_TX1



## LCD\_TP

