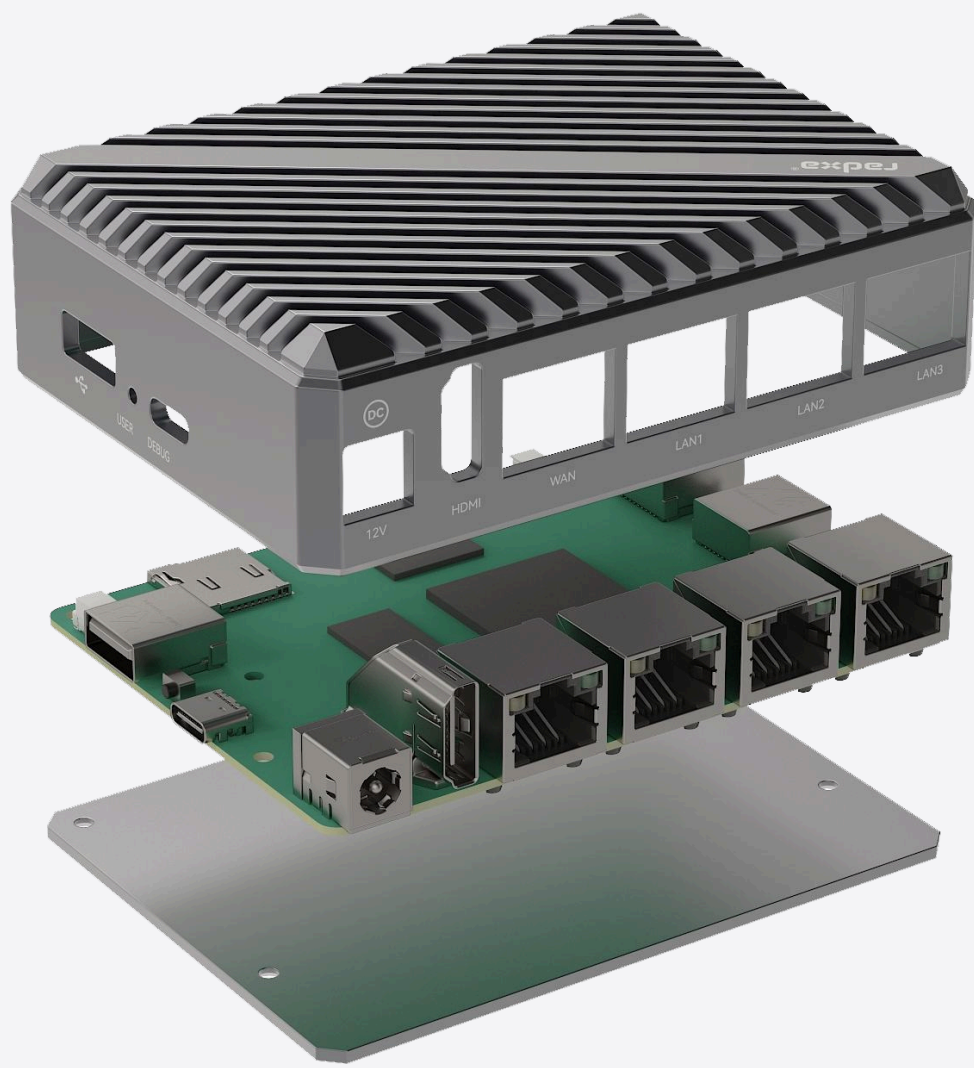


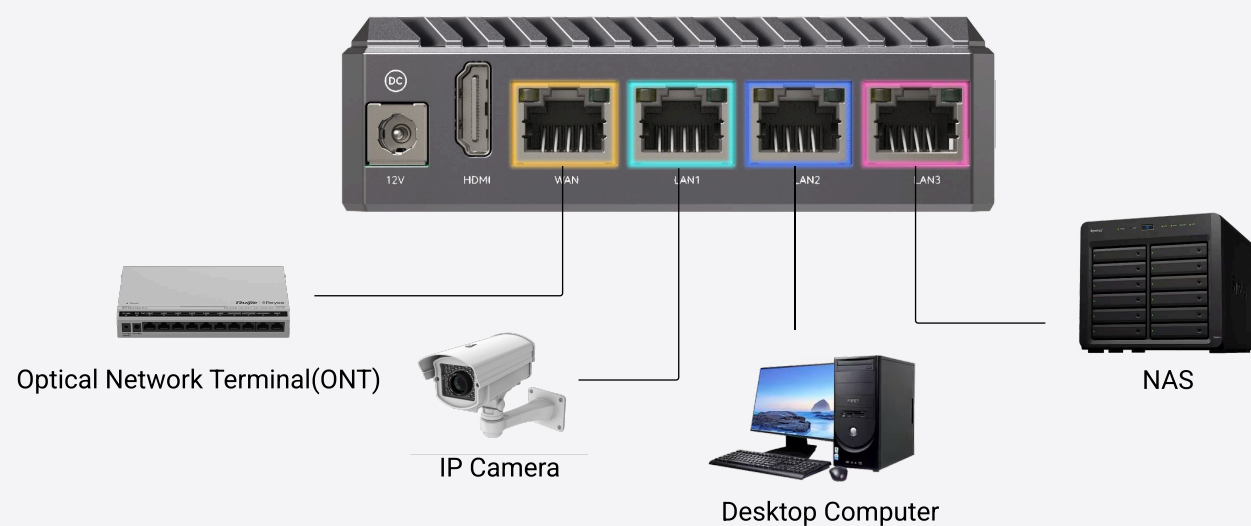
High-Performance AI Edge Network Computer

radxa® E54C



Flexible Networking

Four Gigabit Ethernet ports with configurable WAN/LAN modes and 4-way isolated network support



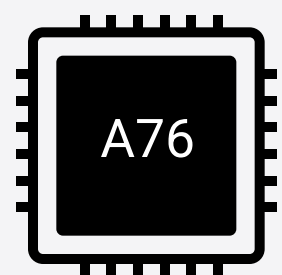
Powerful CPU Performance



Dual-core

Quad Core

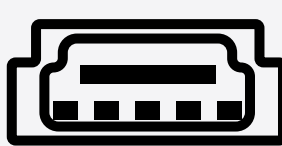
A76 A55



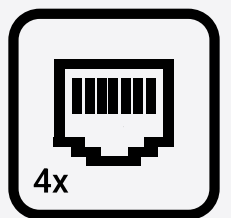
RK3582



HW AES Encryption



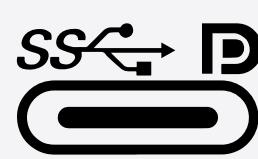
HDMI 2.1



Gigabit Ethernet



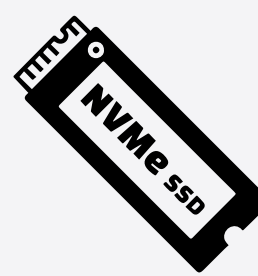
USB 3.0



Type C



Aluminum Alloy Case



M.2 M Key Connector

Advanced AI Capability

5 TOPS

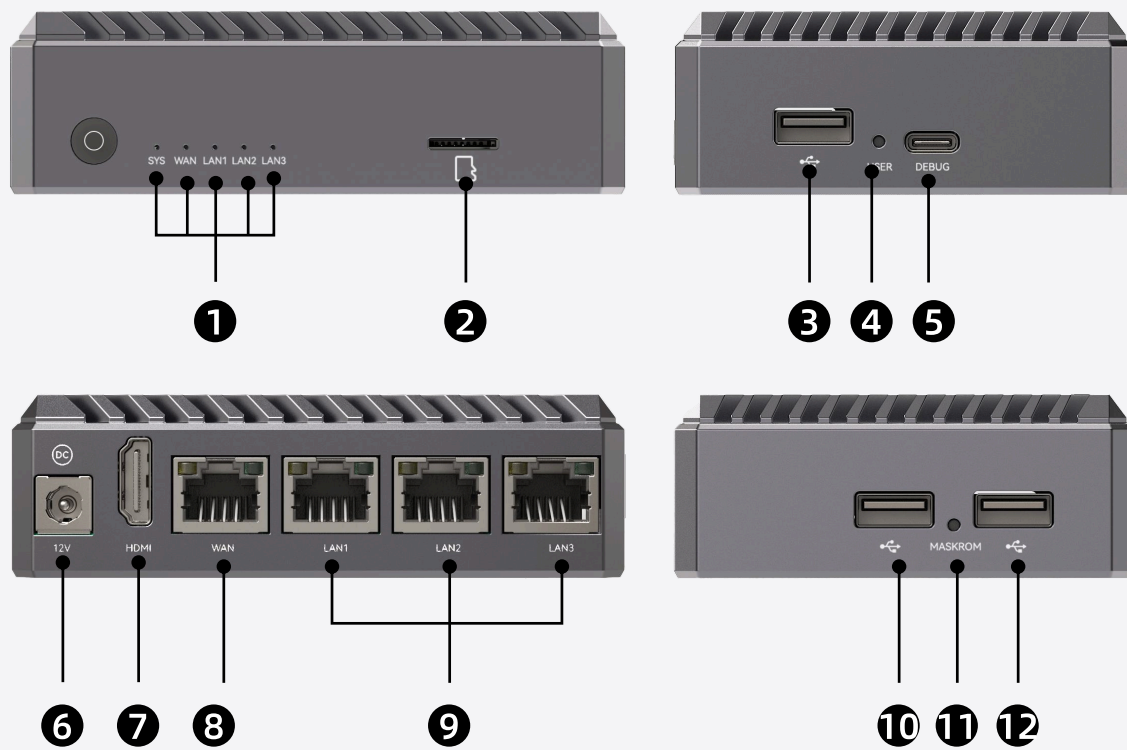
AI Computing Power

1.5B

Parameters (LLM)



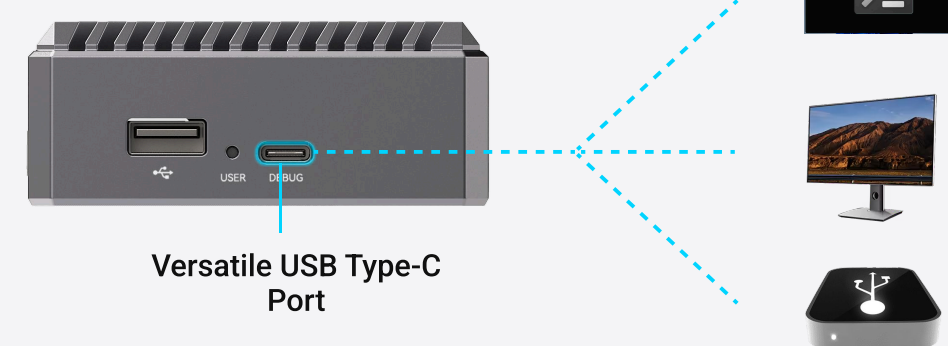
Support Deepseek



- 1 LED Indicator
- 2 microSD Slot
- 3 USB 3.0 Type-A Port
- 4 User Key
- 5 USB 3.0 Type-C device and debug combo port
- 6 12V DC (5.5x2.5mm) Port
- 7 HDMI Port
- 8 GbE WAN Port
- 9 3x GbE LAN Port
- 10 USB 2.0 Port
- 11 Maskrom Emergency Download Key
- 12 USB 2.0 Port

Versatile Type-C Combo Port

- Debug
- Display
- USB Device



Expansive Memory and Storage

Supports up to 32GB RAM

Storage Expansion up to 4TB NVMe SSD

Robust Software Ecosystem

Full support for Debian Linux, OpenWrt, and comprehensive Linux hardware access/control libraries

