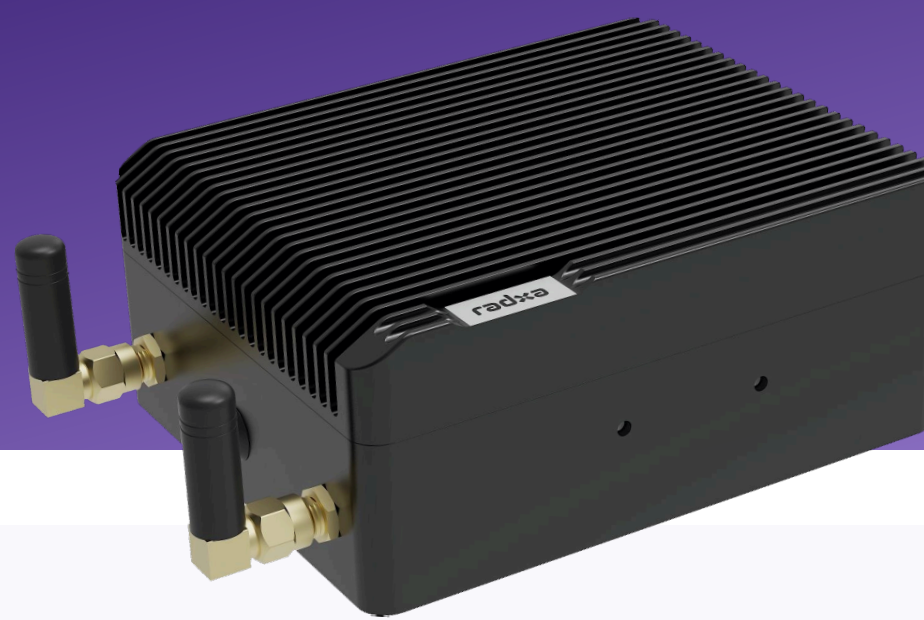


Edge AI, Ready from Day One



Leading the New Era of Edge AI

The Fogwise® AIRbox Q900 is a high-performance embedded AI micro-server, powered by the Qualcomm IQ-9075. It delivers 200 TOPS @INT8(Sparse), supports multiple precisions (INT8/FP16/FP32), and is engineered for flexible deployment of mainstream AI models like private GPT and text-to-image.

By processing AI at the edge, the AIRbox Q900 unlocks three core advantages:

- Low Latency, Real-time response without reliance on the cloud.
- Privacy & Security, Data is processed locally, ensuring user information remains protected.
- Optimized Costs, reduces network bandwidth and cloud computing expenses.



Designed for diverse AI scenarios, the AIRbox Q900 is the solid foundation for next-generation edge intelligence.

Powered by Qualcomm Dragonwing IQ-9075

AIRbox Q900 is powered by the Qualcomm® IQ-9075 processor, which integrates high-performance CPU, GPU, and NPU:

- The octa-core Kryo Gen6 CPU based on A78C architecture runs up to 2.36 GHz, delivering 230K DMIPS for demanding tasks.
- The Adreno™ 663 GPU supports Vulkan 1.2, OpenCL 2.0 FP, and OpenGL ES 3.2, boosting 3D rendering and parallel computing.
- Dual Hexagon™ NPUs with a Hexagon Tensor Processor provide up to 200 Sparse TOPS AI performance for deep learning, image, and speech processing.

Comprehensive AI Development Ecosystem

- QAirT SDK: Efficiently runs TensorFlow, PyTorch, and ONNX models on the NPU.
- AIMET Tools: Accelerate edge inference with quantization, pruning, and compression.
- QAI Application Builder: Converts models into full applications through visual or scripted workflows.
- QAI Hub: Provides pre-trained models for image, object, and speech tasks.

Simplifies AI deployment

- No complex setup, models and applications run instantly at startup.
- Comes with an optimized Linux system and supports mainstream AI frameworks.
- Provides SDKs and APIs to help developers quickly integrate AI functionalities.

CasaOS with Containerized AI Applications

- Graphical interface for easy installation and management of applications
- Runs in Docker containers for isolated and secure environments
- Pre-installed with a variety of applications and services, supporting one-click installation of mainstream AI frameworks and tools

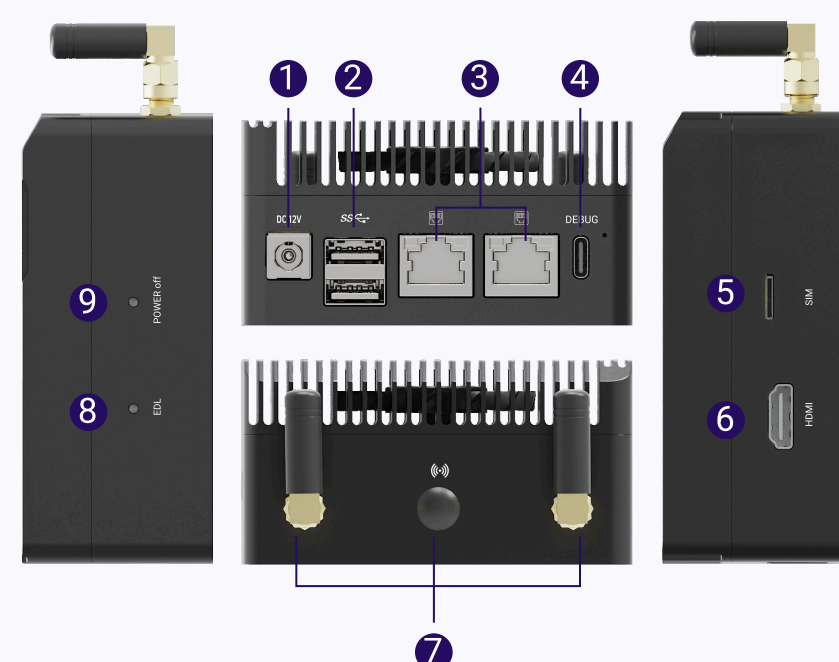
Flexible Connectivity & Expansion

- Supports 4G/5G, Wi-Fi 6/BT 5.4, and Gigabit Ethernet for versatile networking across multiple scenarios.
- Features USB, HDMI, M.2 M Key, and other interfaces for seamless connection with cameras and storage devices.

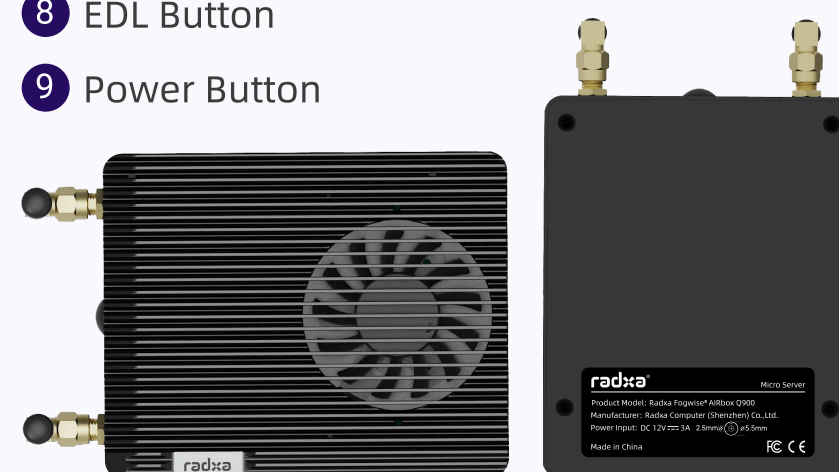
Industrial-Grade Design

- A dynamic fan adjusts speed to deliver efficient heat dissipation and low-noise operation.
- Built to perform reliably across industrial-grade temperatures, even in tough conditions.
- Full metal enclosure with active cooling ensures continuous high-load performance

Interface



- 1 12V DC Power Input
- 2 Up: USB 3.1 Gen2 HOST A Port
Down: USB 3.1 Gen2 OTG A Port
- 3 2x 2.5G RJ45 GbE (with TSN)
- 4 Type-C Serial Console Port
- 5 Nano SIM Slot
- 6 Standard HDMI 2.0
- 7 3x External Antennas
- 8 EDL Button
- 9 Power Button



Applications

- Edge Generative AI
- Real-time Computer Vision
- Industrial Automation
- Robotics Development
- Education & Research

Specifications

Product	Fogwise AIRbox Q900
CPU	Octa-Core Kryo Gen 6 (based Cortex-A78C) @2.36 GHz
GPU	Adreno 663 GPU <ul style="list-style-type: none">Delivers 1.2 TFLOPS FP32 with secure GPU computeSupports Vulkan 1.2, OpenGL ES 3.2, OpenCL 2.0 FPSupports Adreno NN Direct
MCU	Quad-core Cortex-R52 @ 1.85GHz
NPU	Features the Hexagon Tensor Processor (HTP) with quad HVX and dual HMX AI Compute: 200 TOPS@INT8 (Sparse)
Video Codec	Adreno VPU 765 Decode: <ul style="list-style-type: none">Supports AV1 / HEVC / H.264 / H.265 / VP9 / MPEG2 formats1x 8Kp60 / 2x 8Kp30 / 4x 4Kp60 / 8x 4Kp30 / 16x 1080p60 / 32x 1080p30 Encode: <ul style="list-style-type: none">Supports H.264 / H.265 / HEIF / HEIC formats2x 4Kp60 / 4x 4Kp30 / 8x 1080p60 / 16x 1080p30 Concurrent 2x 4Kp60 encode + 2x 4Kp60 decode
RAM	36GB 96bit LPDDR5@6400MT/s (with ECC)
Storage	1x Onboard 32MB SPI Flash 1x UFS & eMMC Connector 1x Onboard 128GB UFS 3.1 (Gear4 x2) 1x M.2 M Key Slot (PCIe Gen4 x4)
Display	1x Standard HDMI 2.0 (Up to 4K@60fps)
Wired Networking	2 x RJ45 2.5G GbE (with TSN)
Wireless Networking	1x Mini PCIe Slot <ul style="list-style-type: none">Supports Wi-Fi 6 / BT 5.4Supports 4G / 5G Mini PCIe module for cellular network connectivity 1x Nano SIM Card Slot Supports up to 3 external antennas
USB Ports	1x USB 3.1 Gen2 Type-A HOST Port 1x USB 3.1 Gen2 Type-A OTG Port 1x Type-C Serial Console Port
Power Supply	12V/5.4A DC (5.5x2.5mm) Power input
Other Interfaces	1x PWM Fan Connector 1x RTC Battery Connector 1x EDL Button 1x Power Button
Operating System	Supports Ubuntu, Yocto, etc.
Dimension	104 x 84 x 45 mm
Operation Temperature	0°C ~ 60 °C

AIRbox is



AI Ready
Plug-and-play AI deployment



AI Recognition
Vision, voice, and data recognized in milliseconds



AI Reasoning
On-device inference and intelligent decisions



AI Realtime
Millisecond responses, no cloud delay



AI Reliability
Industrial-grade reliability, built to endure

Contact Us

Radxa Computer (Shenzhen) Co.,Ltd.

1602, Block B, FengHuang Zhigu Building, No.50 Tiezai Road, Xixiang, Baoan Shenzhen, 518102 China
Official Website: <https://radxa.com/>



Scan for WeChat
Official Account