

TEST REPORT

Report No.: BCTC2112597510E

Applicant: ROCKPI TRADING LIMITED

Product Name: Rock 3A

Model/Type
reference: RS117-D8U

Tested Date: 2021-12-22 to 2021-12-31

Issued Date: 2022-01-05

Shenzhen BCTC Testing Co., Ltd.



Product Name: Rock 3A
Trademark: N/A
Model/Type reference: RS117-D8U
RS117-D8, RS117-D4U, RS117-D4, RS117-D2
Prepared For: ROCKPI TRADING LIMITED
Address: Room 11, 27 / f, Ga wah international centre, 191 Javaroad, north point, Hong Kong
Manufacturer: ROCKPI TRADING LIMITED
Address: Room 11, 27 / f, Ga wah international centre, 191 Javaroad, north point, Hong Kong
Prepared By: Shenzhen BCTC Testing Co., Ltd.
Address: 1-2/F., Building B, Pengzhou Industrial Park, No.158, Fuyuan 1st Road, Tangwei, Fuhai Subdistrict, Bao'an District, Shenzhen, Guangdong, China
Sample Received Date: 2021-12-22
Sample tested Date: 2021-12-22 to 2021-12-31
Issue Date: 2022-01-05
Report No.: BCTC2112597510E
Test Standards FCC Part 15B
Test Results PASS

Tested by:



Sheldon Sun/ Project Handler

Approved by:



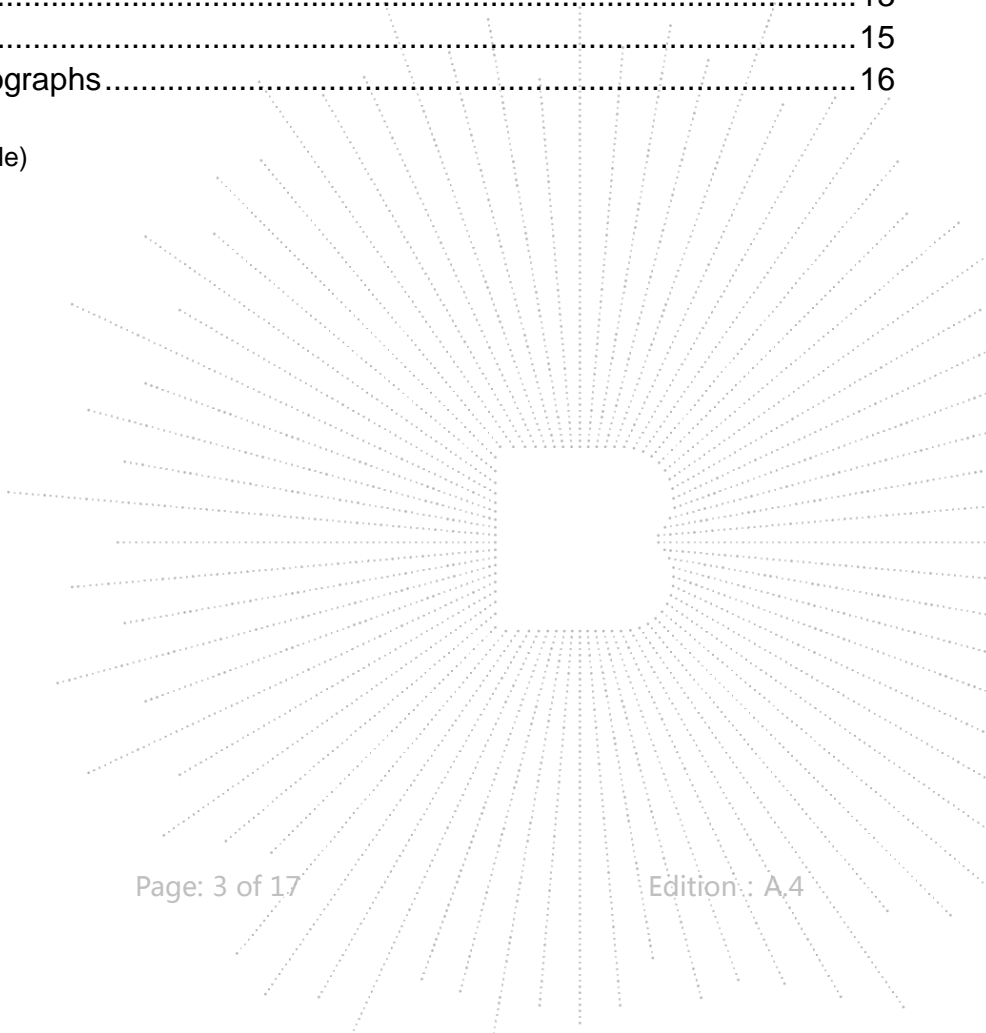
Zero Zhou/Reviewer

The test report is effective only with both signature and specialized stamp. This result(s) shown in this report refer only to the sample(s) tested. Without written approval of Shenzhen BCTC Testing Co., Ltd, this report can't be reproduced except in full. The tested sample(s) and the sample information are provided by the client.

Table Of Content

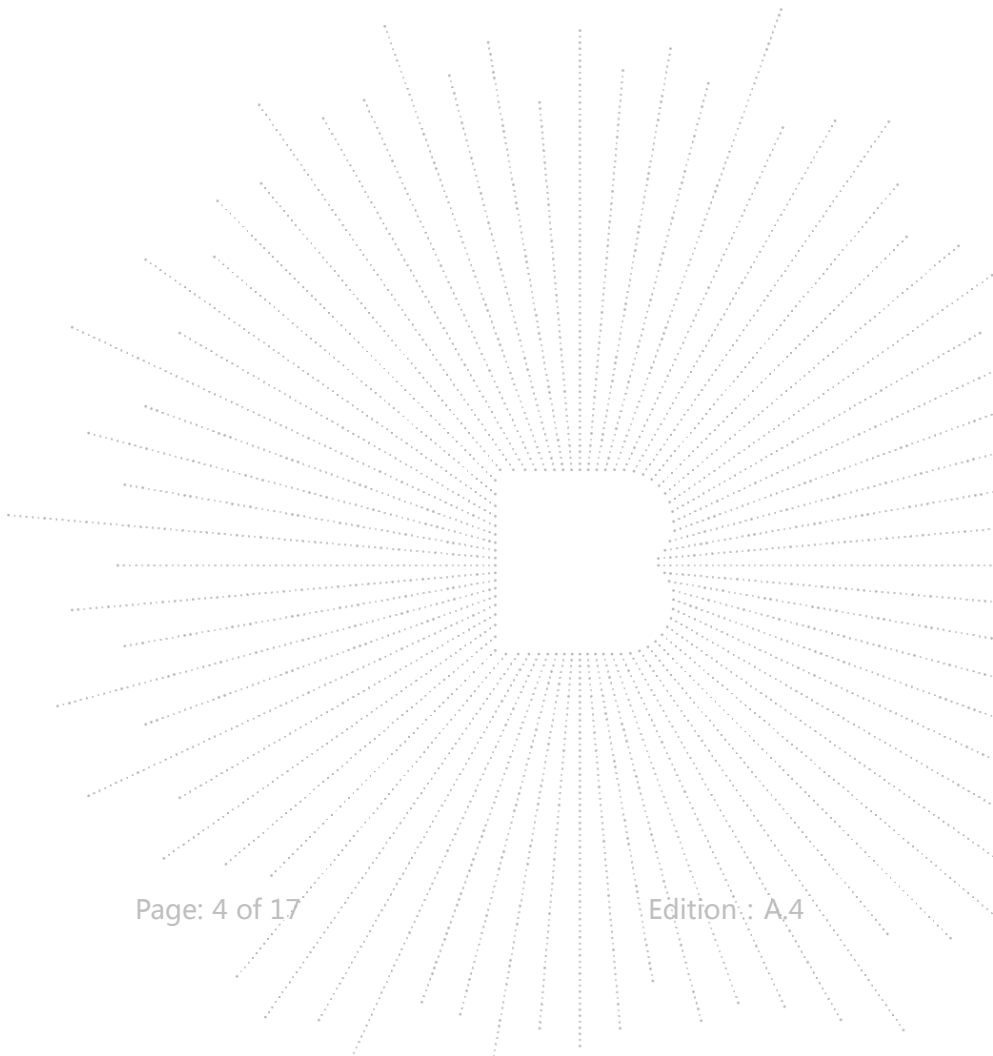
	Page
Test Report Declaration	
1. Version	4
2. Test Summary	5
3. Measurement Uncertainty.....	6
4. Product Information And Test Setup.....	7
4.1 Product Information	7
4.2 Test Setup Configuration	7
4.3 Support Equipment.....	7
4.4 Test Mode.....	7
5. Test Facility And Test Instrument Used.....	8
5.1 Test Facility	8
5.2 Test Instrument Used	8
6. Conducted Emission At The Mains Terminals Test.....	9
6.1 Block Diagram Of Test Setup	9
6.2 Limit.....	9
6.3 Test procedure	9
6.4 Test Result	10
7. Radiation Emission Test.....	12
7.1 Block Diagram Of Test Setup	12
7.2 Limit.....	12
7.3 Test Procedure	12
7.4 Test Result	13
8. EUT Photographs	15
9. EUT Test Setup Photographs.....	16

(Note: N/A Means Not Applicable)



1. Version

Report No.	Issue Date	Description	Approved
BCTC2112597510E	2022-01-05	Original	Valid



2. Test Summary

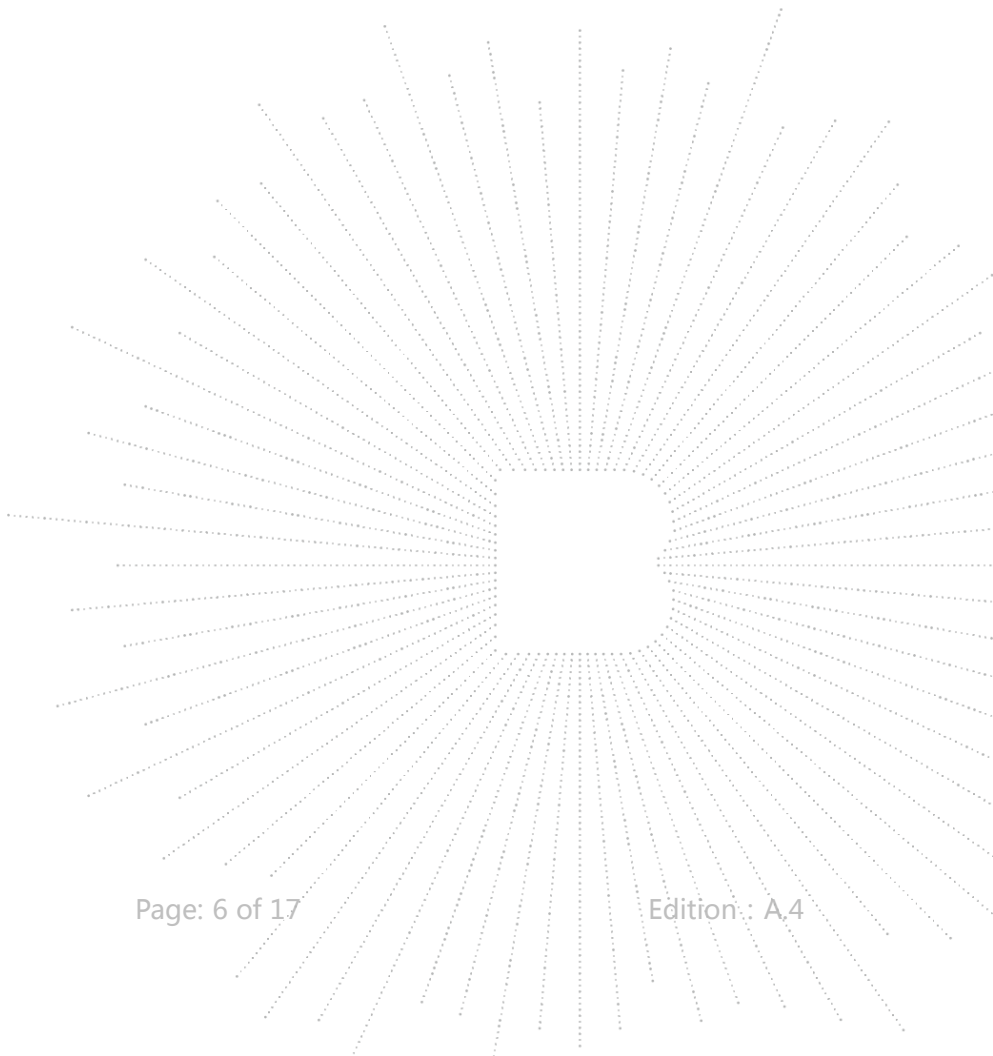
The Product has been tested according to the following specifications:

Standard	Test Item	Test result
FCC Part 15B	Conducted Emission	Pass
FCC Part 15B	Radiated Emission	Pass

3. Measurement Uncertainty

Where relevant, the following measurement uncertainty levels have been estimated for tests performed on the Product as specified in CISPR 16-4-2. This uncertainty represents an expanded uncertainty expressed at approximately the 95% confidence level using a coverage factor of $k=2$.

Test item	Value (dB)
Conducted Emission (150kHz-30MHz)	3.20
Radiated Emission(30MHz~1GHz)	4.80



4. Product Information And Test Setup

4.1 Product Information

Ratings: Input: DC9V/12V/15V/20V 2A
 Power: 18W~40W
 Input From Adapter

Model differences: All models are identical except for the appearance color, the test model is RS117-D8U and the test results are applicable to other tests.

The highest frequency of the internal sources of the EUT is (less than 108)MHz:

less than 1.705 MHz, the measurement shall only be made up to 30 MHz.
 between 1.705 MHz and 108 MHz, the measurement shall only be made up to 1 GHz.
 between 108 MHz and 500 MHz, the measurement shall only be made up to 2 GHz.
 between 500 MHz and 1 GHz, the measurement shall only be made up to 5 GHz.
 above 1 GHz, the measurement shall be made up to 5 times the highest frequency or 40GHz, whichever is less.

4.2 Test Setup Configuration

See test photographs attached in EUT TEST SETUP PHOTOGRAPHS for the actual connections between Product and support equipment.

4.3 Support Equipment

No.	Device Type	Brand	Model	Series No.	Data Cable	Power Cord
1.	Display	AOC	T3250MDK	---	---	---
2.	Adapter	Ugreen	CD122			

Notes:

- All the equipment/cables were placed in the worst-case configuration to maximize the emission during the test.
- Grounding was established in accordance with the manufacturer's requirements and conditions for the intended use.

4.4 Test Mode

Test item	Test Mode	Test Voltage
Conducted emissions from the AC mains power ports (150KHz-30MHz) <input checked="" type="checkbox"/> Class B	Working	AC120V/60Hz
Radiated emissions(30MHz-1GHz) <input checked="" type="checkbox"/> Class B	Working	AC120V/60Hz
Working: HDMI+ mouse + keyboard + burner software + USB disk +ping IP		

5. Test Facility And Test Instrument Used

5.1 Test Facility

All measurement facilities used to collect the measurement data are located at Shenzhen BCTC Testing Co., Ltd. Address: 1-2/F., Building B, Pengzhou Industrial Park, No.158, Fuyuan 1st Road, Tangwei, Fuhai Subdistrict, Bao'an District, Shenzhen, Guangdong, China. The site and apparatus are constructed in conformance with the requirements of ANSI C63.4 and CISPR 16-1-1 other equivalent standards.

5.2 Test Instrument Used

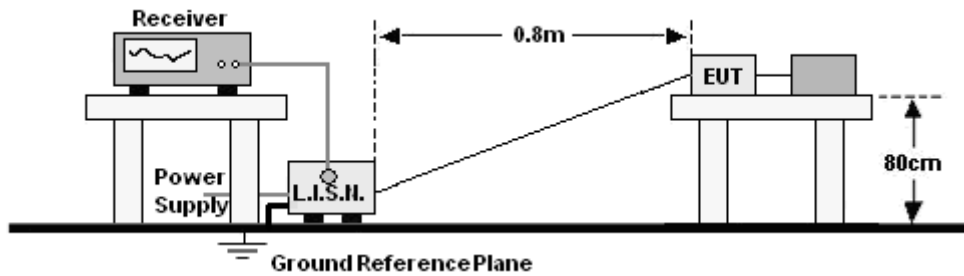
Conducted Emissions Test					
Equipment	Manufacturer	Model#	Serial#	Last Cal.	Next Cal.
Receiver	R&S	ESR3	102075	May 28, 2021	May 27, 2022
LISN	R&S	ENV216	101375	May 28, 2021	May 27, 2022
Software	Frad	EZ-EMC	EMC-CON 3A1	\	\
Attenuator	\	10dB DC-6GHz	1650	May 28, 2021	May 27, 2022

Radiated Emissions Test (966 Chamber#01)					
Equipment	Manufacturer	Model#	Serial#	Last Cal.	Next Cal.
966 chamber	ChengYu	966 Room	966	Jun. 06. 2020	Jun. 05, 2023
Receiver	R&S	ESRP	101154	May 28, 2021	May 27, 2022
Receiver	R&S	ESR3	102075	May 28, 2021	May 27, 2022
Amplifier	SKET	LAPA_01G18 G-45dB	\	May 28, 2021	May 27, 2022
Amplifier	Schwarzbeck	BBV9744	9744-0037	May 28, 2021	May 27, 2022
TRILOG Broadband Antenna	schwarzbeck	VULB9163	942	Jun. 01, 2021	May 31, 2022
Horn Antenna	schwarzbeck	BBHA9120D	1541	Jun. 02, 2021	Jun. 01, 2022
Software	Frad	EZ-EMC	FA-03A2 RE	\	\

6. Conducted Emission At The Mains Terminals Test

6.1 Block Diagram Of Test Setup

For mains ports:



6.2 Limit

Limits for Class B devices

Frequency range (MHz)	Limits dB(μ V)	
	Quasi-peak	Average
0,15 to 0,50	66 to 56*	56 to 46*
0,50 to 5	56	46
5 to 30	60	50

Notes: 1. *Decreasing linearly with logarithm of frequency.
2. The lower limit shall apply at the transition frequencies.

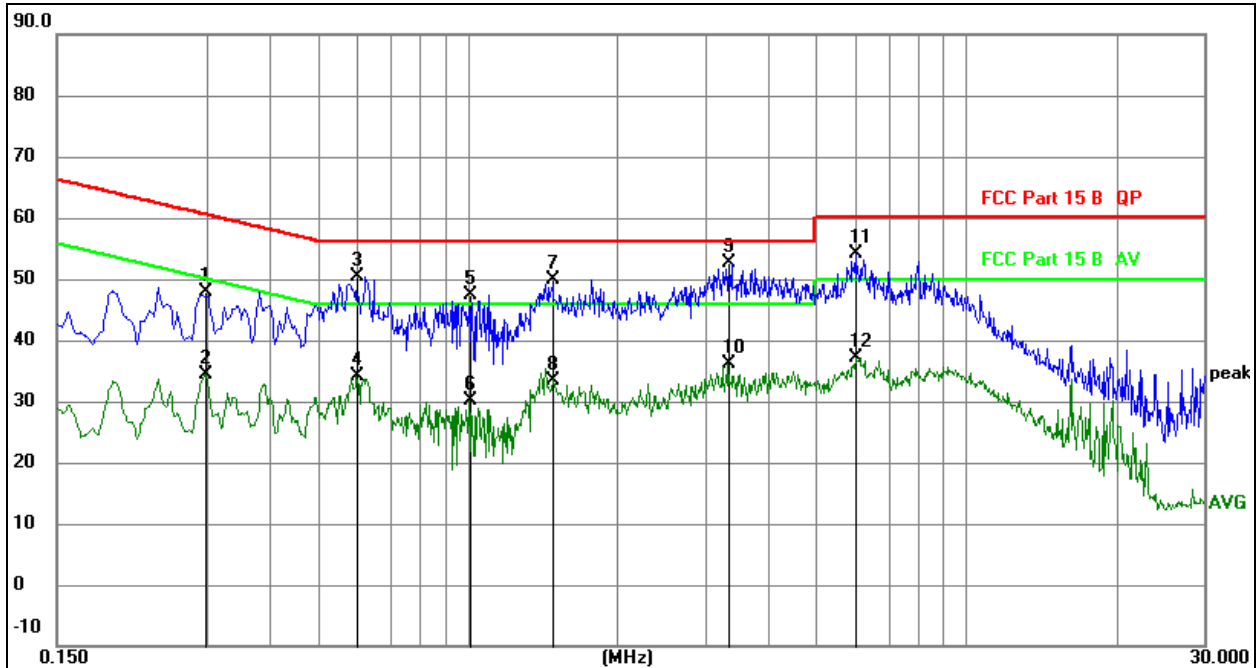
6.3 Test procedure

For mains ports:

- The Product was placed on a nonconductive table 0.8 m above the horizontal ground reference plane, and 0.4 m from the vertical ground reference plane, and connected to the main through Line Impedance Stability Network (L.I.S.N).
- The RBW of the receiver was set at 9 kHz in 150 kHz ~ 30MHz with Peak and AVG detector in Max Hold mode. Run the receiver's pre-scan to record the maximum disturbance generated from Product in all power lines in the full band.
- For each frequency whose maximum record was higher or close to limit, measure its QP and AVG values and record.

6.4 Test Result

Temperature:	26 °C	Relative Humidity:	54%
Pressure:	101kPa	Phase :	Line
Test Voltage :	AC120V/60Hz	Test Mode:	Working

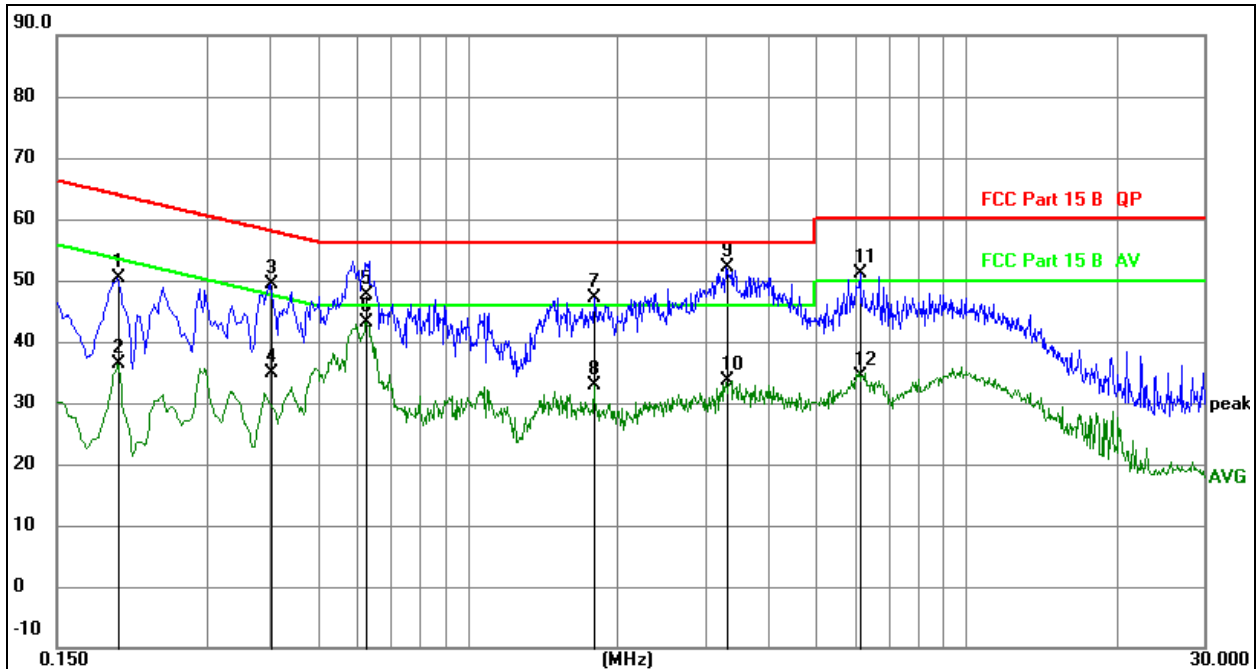


Remark:

1. All readings are Quasi-Peak and Average values.
2. Factor = Insertion Loss + Cable Loss.

No.	Mk.	Freq. MHz	Reading Level	Correct Factor dB	Measure- ment dBuV	Limit dBuV	Over dB	Detector
1		0.2985	28.22	19.61	47.83	60.28	-12.45	QP
2		0.2985	14.84	19.61	34.45	50.28	-15.83	AVG
3		0.6000	30.67	19.62	50.29	56.00	-5.71	QP
4		0.6000	14.50	19.62	34.12	46.00	-11.88	AVG
5		1.0050	27.82	19.63	47.45	56.00	-8.55	QP
6		1.0050	10.53	19.63	30.16	46.00	-15.84	AVG
7		1.4819	30.25	19.63	49.88	56.00	-6.12	QP
8		1.4819	13.87	19.63	33.50	46.00	-12.50	AVG
9	*	3.3450	32.91	19.67	52.58	56.00	-3.42	QP
10		3.3450	16.36	19.67	36.03	46.00	-9.97	AVG
11		6.0000	34.35	19.72	54.07	60.00	-5.93	QP
12		6.0000	17.42	19.72	37.14	50.00	-12.86	AVG

Temperature:	26 °C	Relative Humidity:	54%
Pressure:	101kPa	Phase :	Neutral
Test Voltage :	AC120V/60Hz	Test Mode:	Working


Remark:

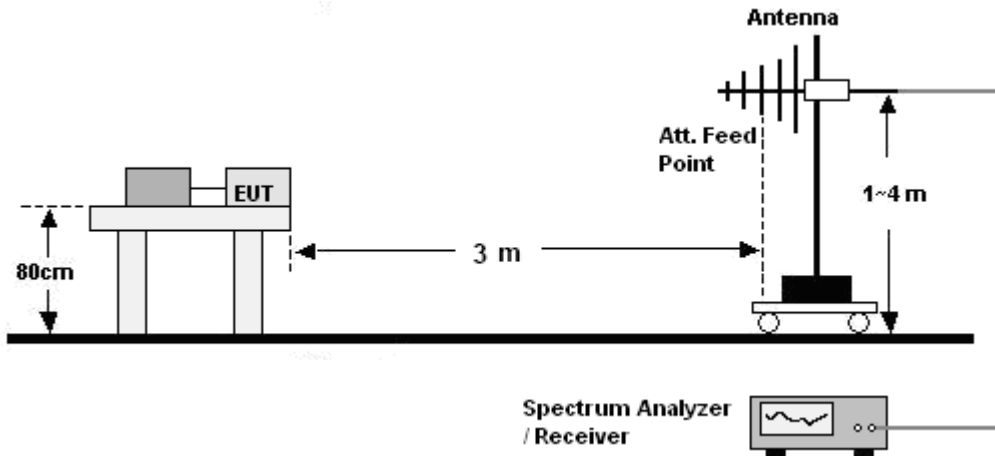
1. All readings are Quasi-Peak and Average values.
2. Factor = Insertion Loss + Cable Loss.

No.	Mk.	Freq.	Reading Level	Correct Factor	Measurement	Limit	Over	Detector
		MHz		dB	dBuV	dBuV	dB	
1		0.1995	30.83	19.61	50.44	63.63	-13.19	QP
2		0.1995	16.81	19.61	36.42	53.63	-17.21	AVG
3		0.4020	29.73	19.62	49.35	57.81	-8.46	QP
4		0.4020	15.37	19.62	34.99	47.81	-12.82	AVG
5		0.6270	28.06	19.62	47.68	56.00	-8.32	QP
6	*	0.6270	23.48	19.62	43.10	46.00	-2.90	AVG
7		1.7970	27.43	19.63	47.06	56.00	-8.94	QP
8		1.7970	13.22	19.63	32.85	46.00	-13.15	AVG
9		3.3045	32.36	19.66	52.02	56.00	-3.98	QP
10		3.3045	13.95	19.66	33.61	46.00	-12.39	AVG
11		6.1260	31.46	19.73	51.19	60.00	-8.81	QP
12		6.1260	14.72	19.73	34.45	50.00	-15.55	AVG

7. Radiation Emission Test

7.1 Block Diagram Of Test Setup

30MHz ~ 1GHz:



7.2 Limit

Limits for Class B devices

Frequency (MHz)	limits at 3m dB(μ V/m)		
	QP Detector	PK Detector	AV Detector
30-88	40.0	--	--
88-216	43.5	--	--
216-960	46.0	--	--
960 to 1000	54.0	--	--
Above 1000	--	74.0	54.0

Note: The lower limit shall apply at the transition frequencies.

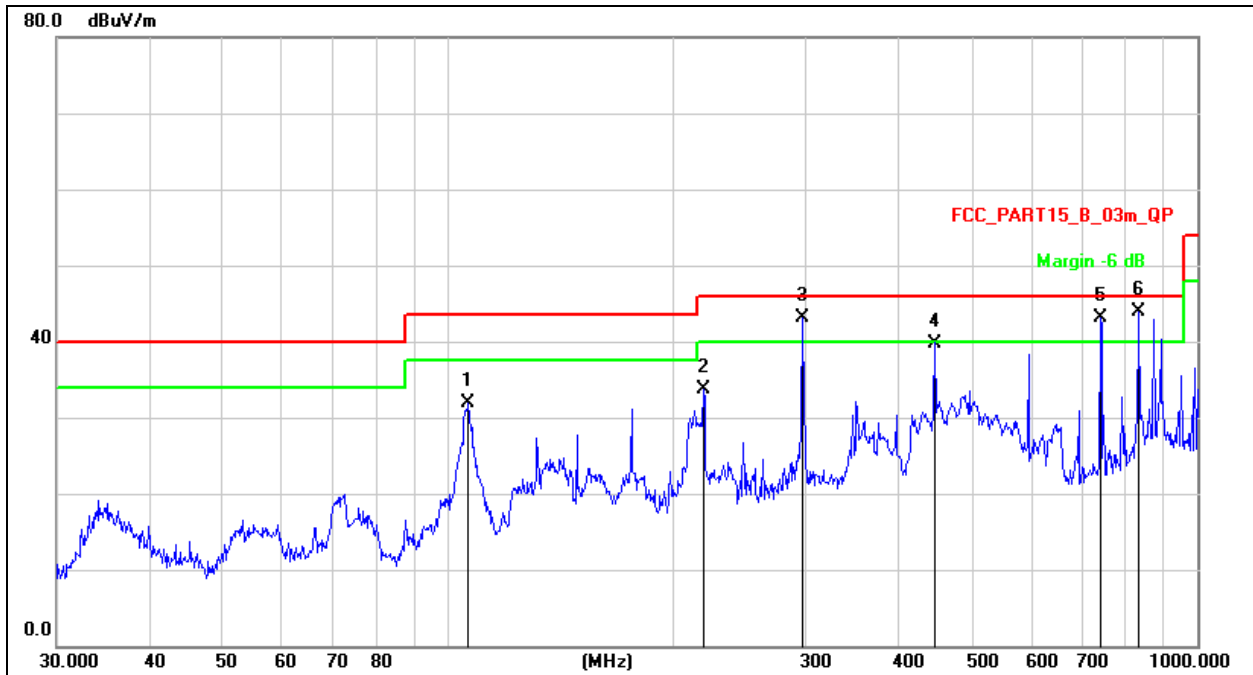
7.3 Test Procedure

30MHz ~ 1GHz:

- The Product was placed on the nonconductive turntable 0.8 m above the ground at a chamber.
- Set the spectrum analyzer/receiver in Peak detector, Max Hold mode, and 120 kHz RBW. Record the maximum field strength of all the pre-scan process in the full band when the antenna is varied between 1~4 m in both horizontal and vertical, and the turntable is rotated from 0 to 360 degrees.
- For each frequency whose maximum record was higher or close to limit, measure its QP value: vary the antenna's height and rotate the turntable from 0 to 360 degrees to find the height and degree where Product radiated the maximum emission, then set the test frequency analyzer/receiver to QP Detector and specified bandwidth with Maximum Hold Mode, and record the maximum value.

7.4 Test Result

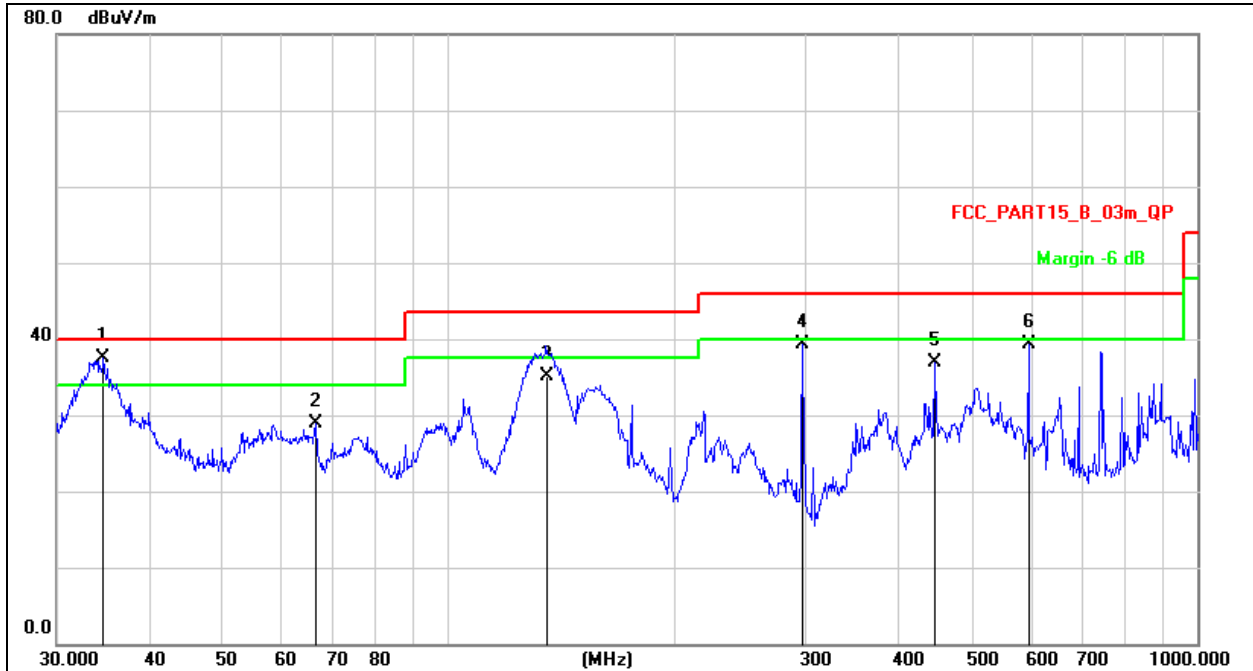
Temperature:	26 °C	Relative Humidity:	54%
Pressure:	101KPa	Phase :	Horizontal
Test Voltage :	AC120V/60Hz	Test Mode:	Working



Remark:
 Factor = Antenna Factor + Cable Loss – Pre-amplifier.

No.	Mk.	Freq. MHz	Reading Level dBuV	Correct Factor dB	Measure- ment dBuV/m	Limit dB/m	Over dB	Detector
1		106.3850	48.39	-16.56	31.83	43.50	-11.67	QP
2		219.0753	48.81	-15.14	33.67	46.00	-12.33	QP
3	!	297.2241	56.99	-13.81	43.18	46.00	-2.82	QP
4		446.4141	49.47	-9.67	39.80	46.00	-6.20	QP
5	!	742.2587	46.05	-2.99	43.06	46.00	-2.94	QP
6	*	836.2443	44.93	-1.11	43.82	46.00	-2.18	QP

Temperature:	26 °C	Relative Humidity:	54%
Pressure:	101KPa	Phase :	Vertical
Test Voltage :	AC120V/60Hz	Test Mode:	Working

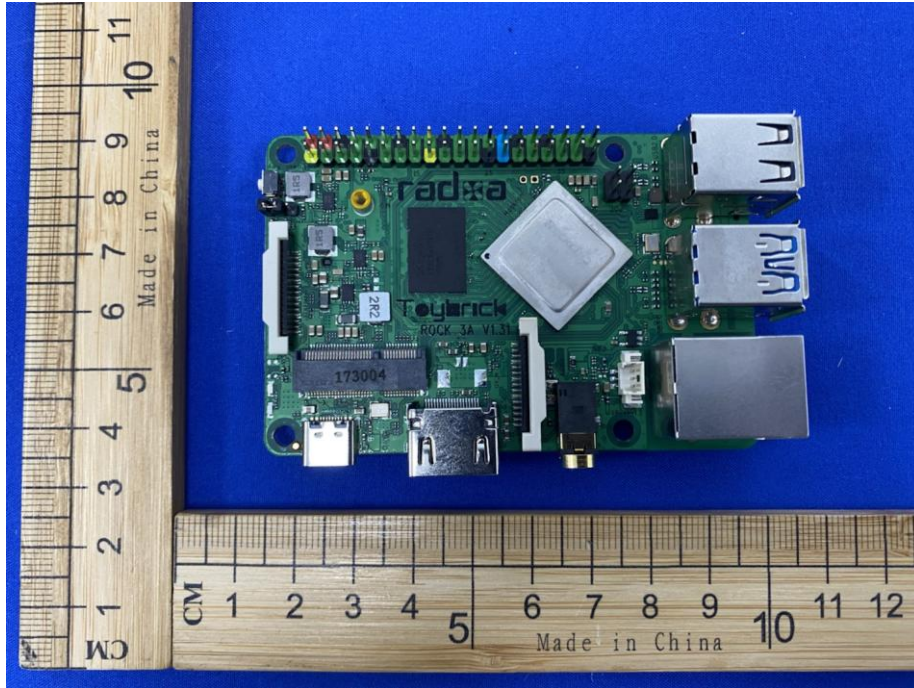


Remark:
Factor = Antenna Factor + Cable Loss – Pre-amplifier.

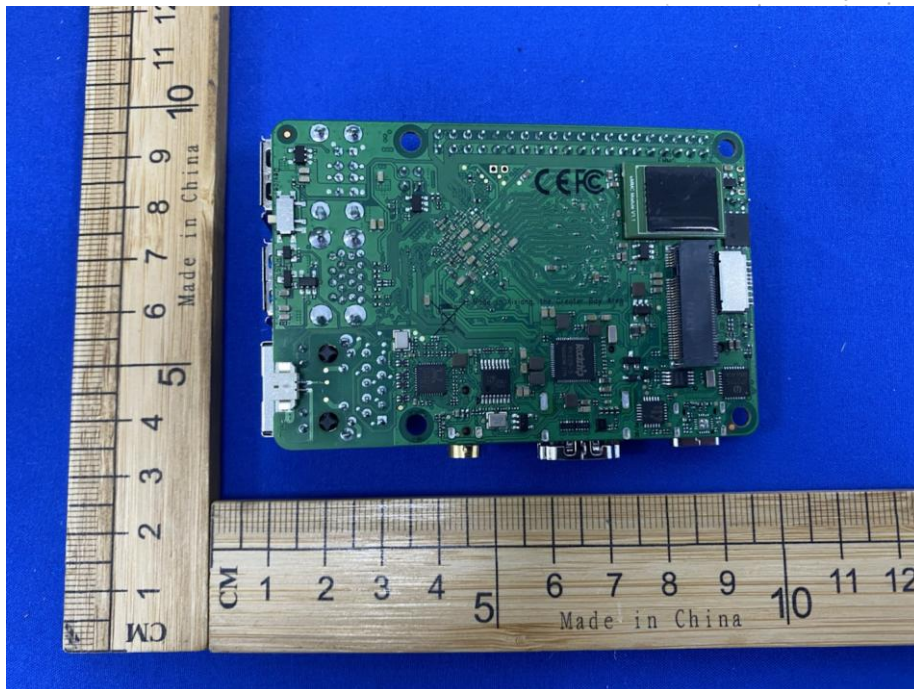
No.	Mk.	Freq. MHz	Reading Level dBuV	Correct Factor dB	Measure- ment dBuV/m	Limit dB/m	Over dB	Detector
1	*	34.6385	55.21	-17.73	37.48	40.00	-2.52	QP
2		66.4989	46.67	-17.79	28.88	40.00	-11.12	QP
3		135.8309	53.74	-18.54	35.20	43.50	-8.30	QP
4		297.2241	53.07	-13.81	39.26	46.00	-6.74	QP
5		446.4141	46.62	-9.67	36.95	46.00	-9.05	QP
6		595.1327	45.40	-6.13	39.27	46.00	-6.73	QP

8. EUT Photographs

EUT Photo 1

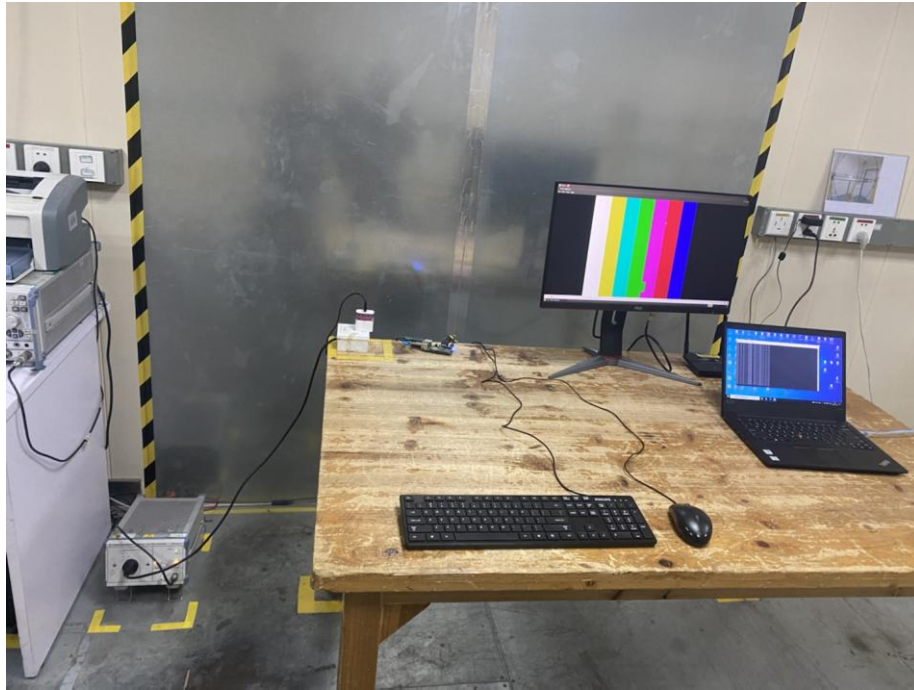


EUT Photo 2

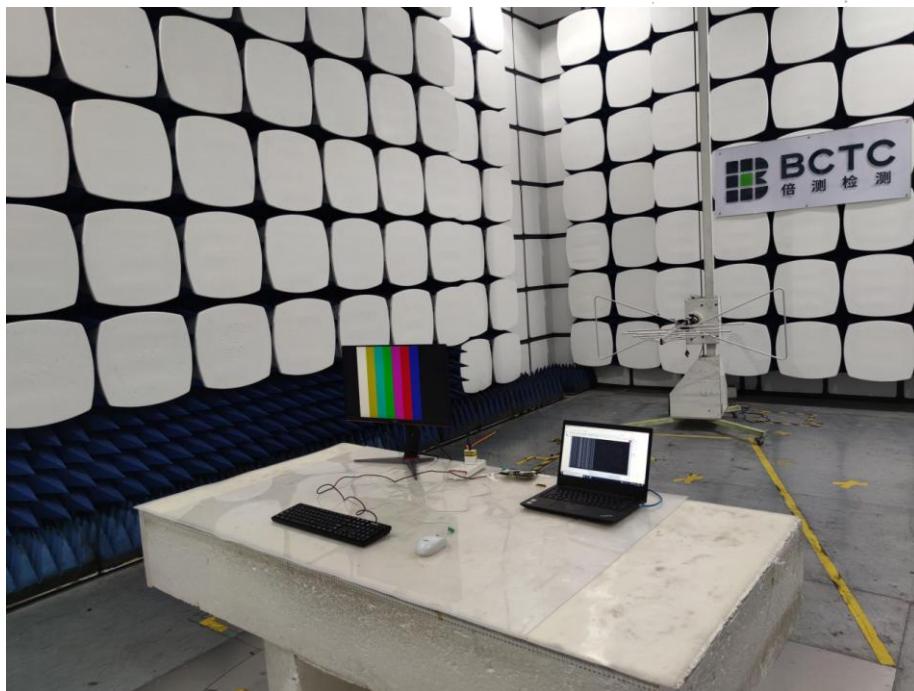


9. EUT Test Setup Photographs

Conducted Emission



Radiated Emission



STATEMENT

- 1.The equipment lists are traceable to the national reference standards.
- 2.The test report can not be partially copied unless prior written approval is issued from our lab.
- 3.The test report is invalid without stamp of laboratory.
- 4.The test report is invalid without signature of person(s) testing and authorizing.
- 5.The test process and test result is only related to the Unit Under Test.
- 6.The quality system of our laboratory is in accordance with ISO/IEC17025.
- 7.If there is any objection to report, the client should inform issuing laboratory within 15 days from the date of receiving test report.

Address:

1-2/F., Building B, Pengzhou Industrial Park, No.158, Fuyuan 1st Road, Tangwei, Fuhai Subdistrict, Bao'an District, Shenzhen, Guangdong, China

TEL : 400-788-9558

P.C.: 518103

FAX : 0755-33229357

Website : <http://www.chnbctc.com>

E-Mail : bctc@bctc-lab.com.cn

***** **END** *****